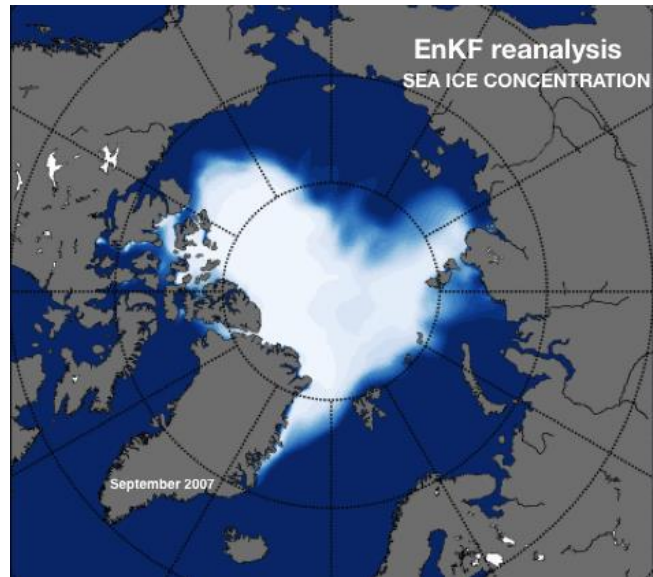


BSC Climate Prediction

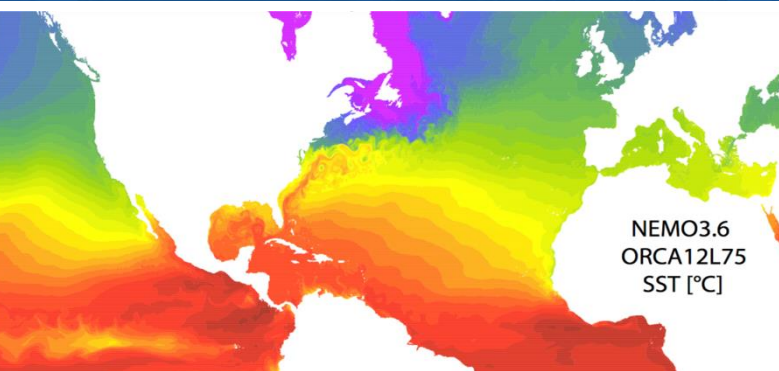
The Climate Prediction group focuses on research activities to advance our knowledge and climate prediction systems through

- inclusion of more realistic physical and biogeochemical processes in models and the increase of model resolution
- application of various data assimilation methods, initialisation techniques and ensemble generation
- analysis of observed and reconstructed climate variability and change
- forecast quality assessment for diagnosis of sources of predictability and prediction errors
- forecast verification for determination of prediction skill and attribution purposes

Our goal is to develop regional and global climate prediction capability for time scales ranging from a few weeks to a few decades into the future



We rely on a wide variety of expertise in terms of climate processes and regions, from the stratosphere down to the deep ocean and from tropical to polar latitudes, as well as expertise in climate modelling and data assimilation. Our primary tool is the EC-Earth European climate model (www.ec-earth.org)



Contact:
Barcelona Supercomputing Center (www.bsc.es)
Earth Sciences Department
Climate Prediction group
+34(93)4134076 ■ mail : info-services-es@bsc.es

