

The new CAMS global and regional emission temporal profiles

Guevara¹, M., Tena¹, C., Jorba¹, O. and Pérez García-Pando^{1,2}, C.

¹ Barcelona Supercomputing Center - Centro Nacional de Supercomputación, Earth Sciences Department, Barcelona, Spain

² ICREA, Passeig Lluís Companys 23, Barcelona, 08010, Spain

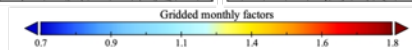
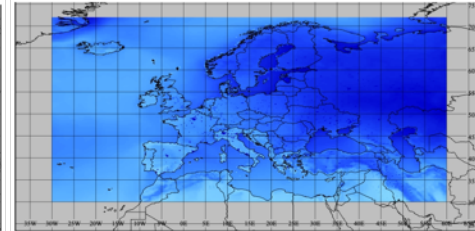
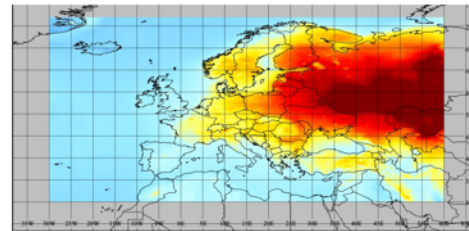
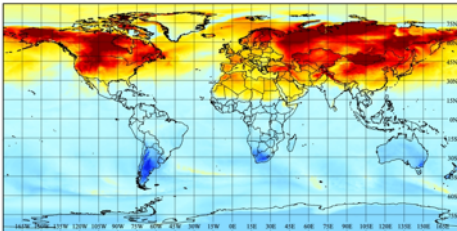
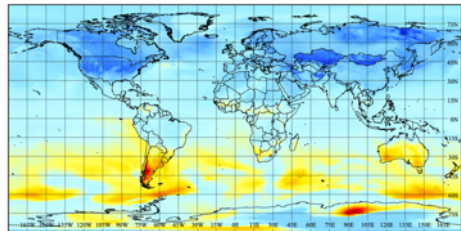
19th GEIA 2020 WEB Conference

CAMS-GLOB-TEMPO (livestock, NH₃) – 06/03/2017

CAMS-GLOB-TEMPO (livestock, NH₃) – 16/07/2017

CAMS-REG-TEMPO (traffic-gasoline, CO) - Jan

CAMS-REG-TEMPO (traffic-gasoline, CO) - Aug



Highlights:

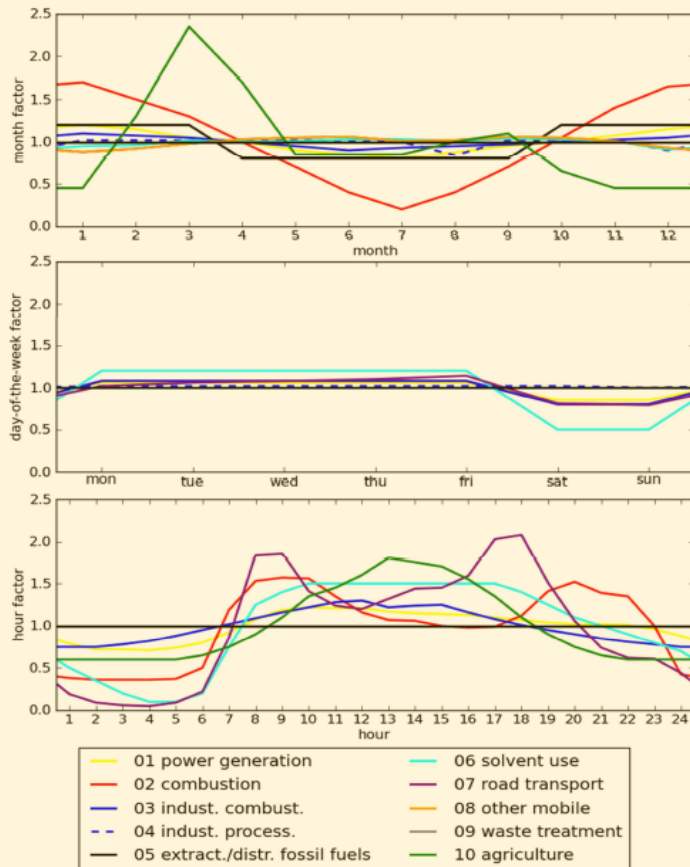
- A collection of **gridded monthly, weekly, daily and hourly temporal profiles** to be combined with the global and regional anthropogenic CAMS emission inventories
- Consideration of **year and pollutant-dependency, spatial variability and meteorological influence**
- Comparison against **real world measurement-based profiles** shows **high correlations**
- Profiles available as **open-access dataset** distributed through the **ECCAD system**
- **Future works** include the **evaluation** of the profiles when used for **air quality modelling activities**

Motivation

Current profiles used in CAMS

Main limitations:

- Mostly based on Western European old source datasets
- Reported as fixed profiles per sector
- Changes in meteorology neglected
- Variable sociodemographic patterns not accounted for

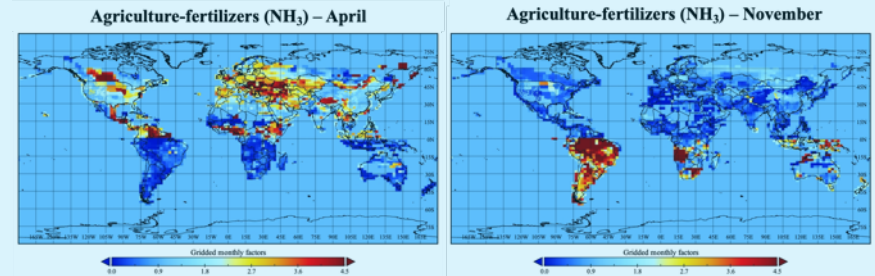


New CAMS-TEMPO profiles

New Features:

- Use of global/national/local up-to-date datasets
- Reported as spatial variant profiles (gridded data)
- Use of meteorological parametrizations
- Consideration of cultural aspects & pollutant dependencies

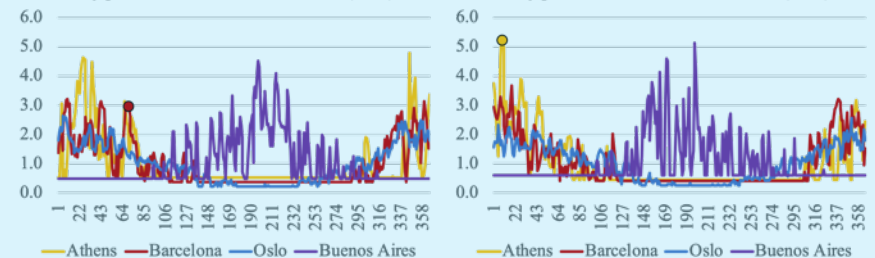
Fertilizers: Influence of national crop calendars



Residential combustion: Influence of temperature and year

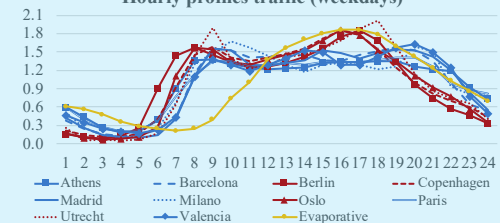
Daily profiles residential/commercial (2010)

Daily profiles residential/commercial (2017)



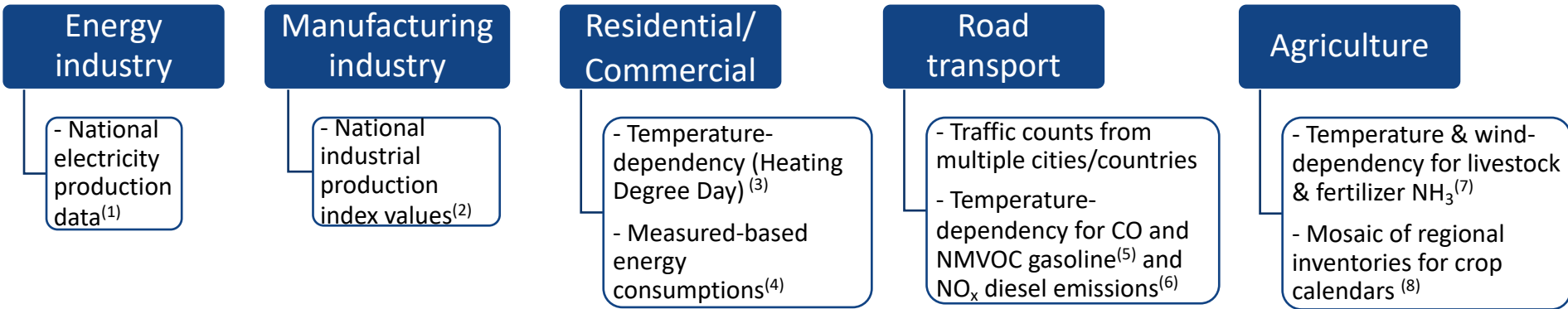
Traffic: Influence of behaviour & process (exhaust vs. evaporative)

Hourly profiles traffic (weekdays)



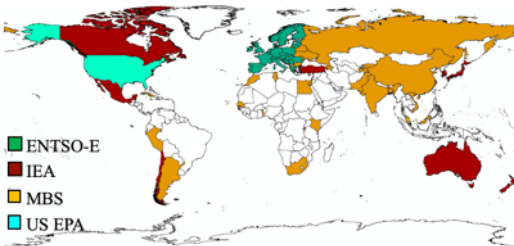
Methodology

- Collection and processing of **multiple open-access socio-economic and statistical datasets**
- Use of **meteorological parametrizations** to consider influence of **temperature/wind speed**

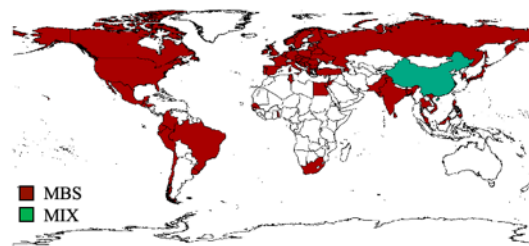


Spatial coverage of input datasets

Energy industry



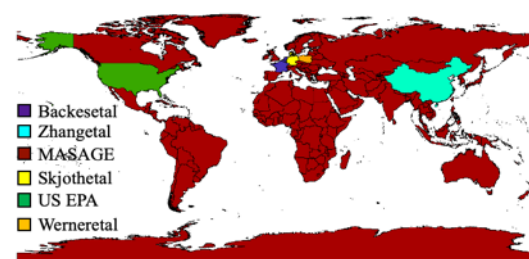
Manufacturing industry



Road transport



Agriculture



(1) [ENTSO-E Transparency Platform](#), [IEA monthly electricity statistics](#), [MBS electricity production](#), [US EPA CEM data](#)

(2) [MBS IPI database](#), Li et al. (2017)

(3) Mues et al., (2014), CS3 (2017)

(4) Finstad et al. (2004), Gröndahl et al. (2010), Athanasopoulou et al. (2017), Carter et al. (2016)

(5) US EPA (2015)

(6) Keller et al. (2017)

(7) Gyldenkerne et al. (2005), Skjøth et al. (2011), CS3 (2017)

(8) Paulot et al. (2014), Zhang et al. (2018), US EPA (2019), Skjøth et al. (2011), Werner et al. (2015), Backes et al. (2016)

Dataset overview

- CAMS-TEMPO follows the domain description and sector classification reported by the CAMS-GLOB_ANT and CAMS-REG_AP/GHG emission inventories
- Depending on the source and resolution (i.e. monthly, weekly, daily, hourly), profiles are reported as gridded values/spatial invariant, yearly dependent (2010-2017) and/or pollutant dependent

| GNFR Sector | Monthly ($\Sigma=12$) | Daily ($\Sigma=365/366$) | Weekly ($\Sigma=7$) | Hourly ($\Sigma=24$) |
|--|---|---|--------------------------|--------------------------------------|
| A: Public Power | (per country, pollutant) | - | (per country, pollutant) | (per country, pollutant) |
| B: Industry | (per country) | - | - | - |
| C: Other Stationary Combustion | (per region, year) | (per region, year) | - | (per region, pollutant) |
| F1: Road Transport exhaust gasoline | (per year, region for CO and NMVOC; per region for others) | - | (per region) | (per region, day type) |
| F2: Road Transport exhaust diesel | (per year, region for NO _x ; per region for others) | - | (per region) | (per region, day type) |
| F3: Road Transport exhaust LPG | Road transport exhaust LPG | (per region) | - | (per region) |
| F4: Road Transport non-exhaust | (per region for PM; fixed for NMVOC) | - | - | (per region for PM; fixed for NMVOC) |
| H: Aviation | (per country) | - | - | (fixed) |
| K: Agriculture Livestock | (per region, year for NH ₃ and NO _x ; fixed for others) | (per region, year for NH ₃ and NO _x) | - | - |
| L: Agriculture Others (fertilizers and a.w.b.) | (per region) | (per region, year for NH ₃) | - | (fixed for non-NH ₃) |

CAMS-GLOB-TEMPOv2.1

Spatial coverage: Global (0.1x0.1 deg)
Sector classification: CAMS-GLOB_ANT



CAMS-REG-TEMPOv2.1

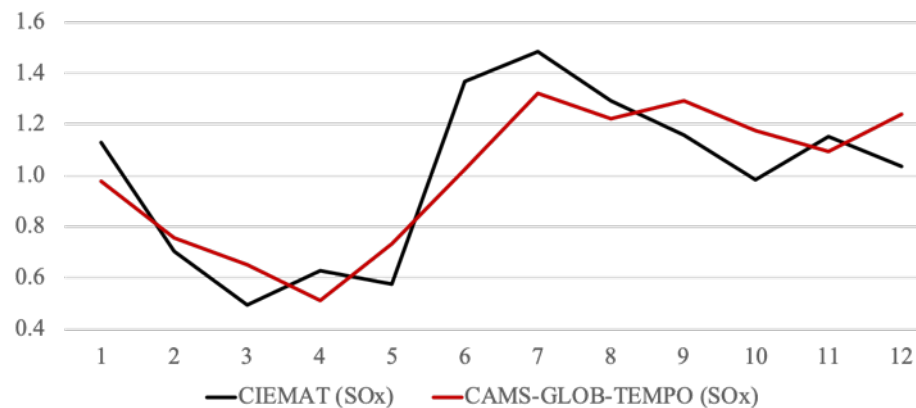
Spatial coverage: Europe (0.05x0.1 deg)
Sector classification: CAMS-REG-AP/GHG

Comparison to observational datasets

Comparison of **CAMS-TEMPO** against real world measurement-based profiles, including....

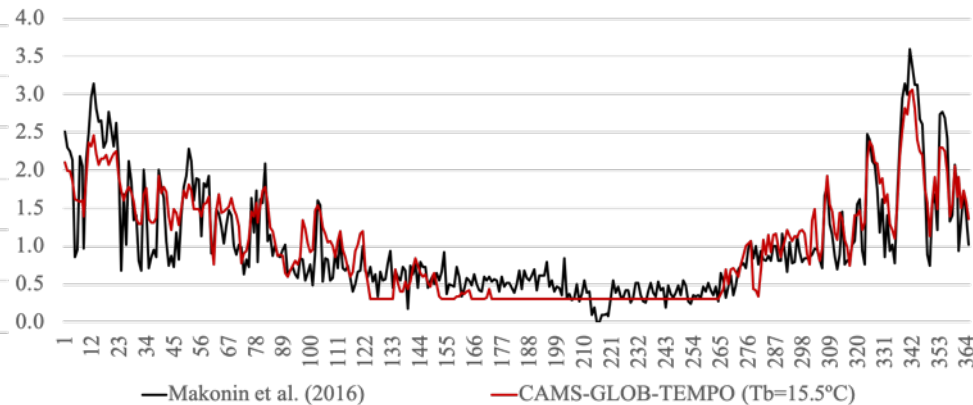
SO₂ measured emissions in power plants (r=0.84)

Monthly profiles energy industry (Spain)



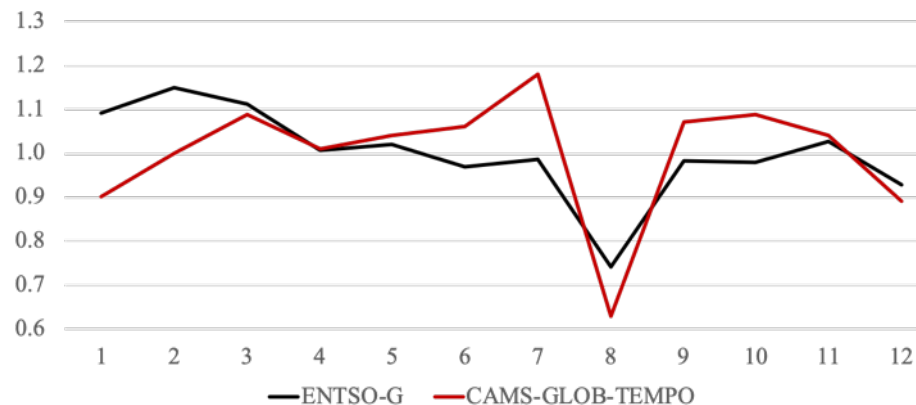
Measurements of residential natural gas consumption (r=0.81)

Daily profiles for residential sector (Vancouver, Canada, 2013)



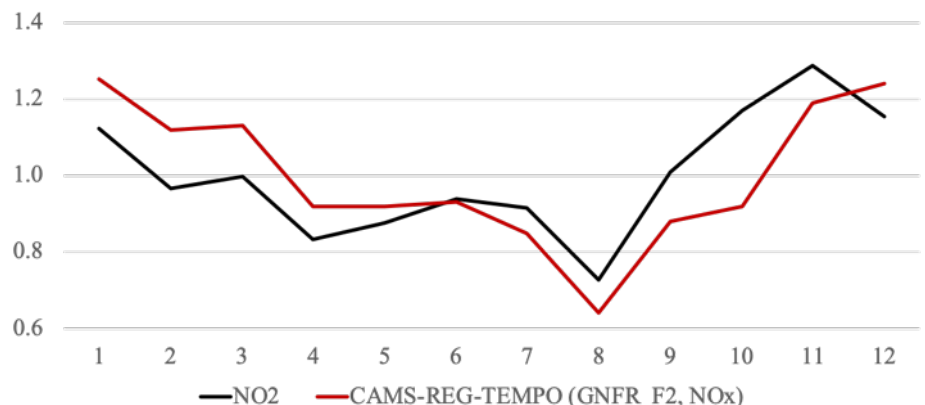
Measurements of industrial natural gas consumption (r=0.61)

Monthly profiles manufacturing industry (Italy)



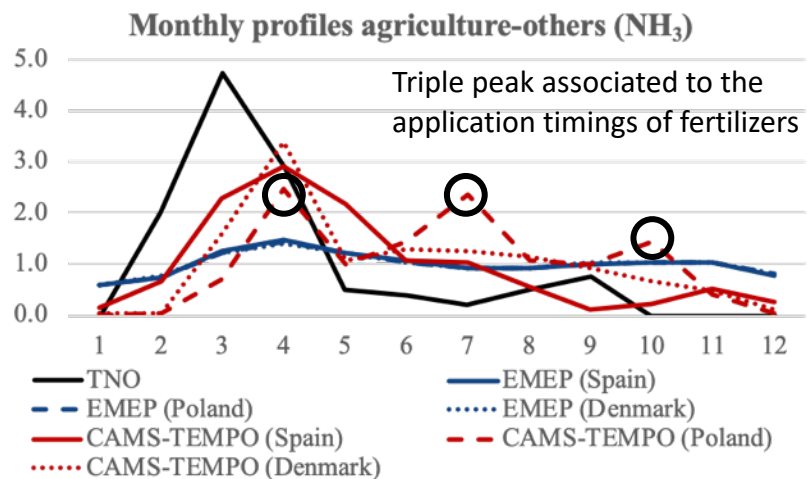
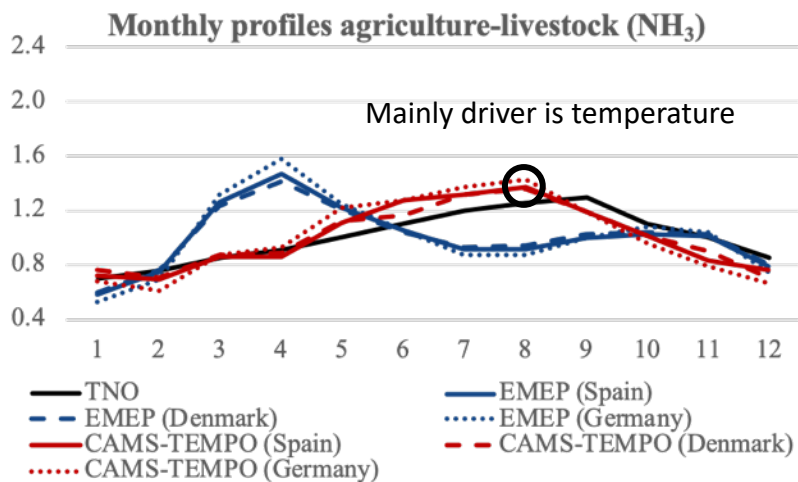
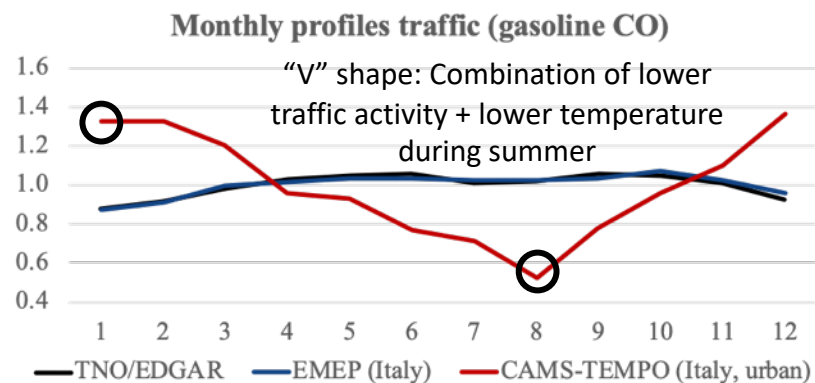
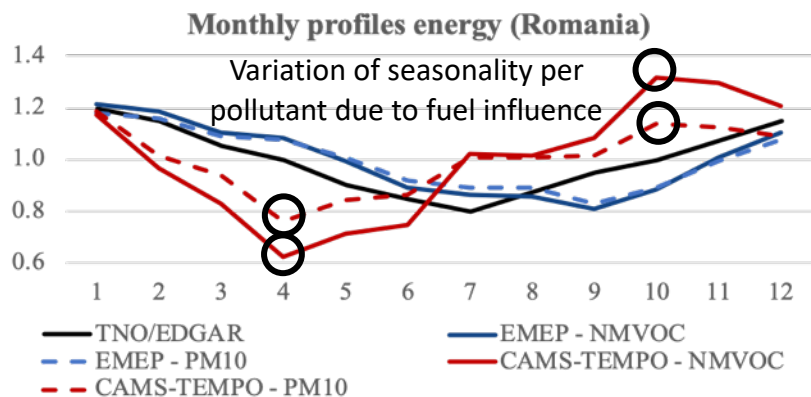
Measurements of NO₂ concentrations at a traffic site (r=0.74)

Monthly profiles traffic (Madrid, 2017)



Comparison to current CAMS profiles

Comparison of CAMS-TEMPO against TNO⁽¹⁾, EMEP⁽²⁾ and EDGAR^(3,4) profiles



⁽¹⁾ Denier van der Gon et al. (2011), ⁽²⁾ Simpson et al. (2012), ⁽³⁾ Janssens-Maenhout et al. (2019), ⁽⁴⁾ Just recently (April 2020) new EDGAR profiles published (Crippa et al., 2020). Comparison not included in the present work.