



**Barcelona
Supercomputing
Center**
Centro Nacional de Supercomputación

The new very-high resolution EC-Earth 4 climate demonstrator

M. Castrillo, M. Acosta, T. Arsouze, I. Ayan, V. Lapin, G. Montané,
S. Palomas, S. Paronuzzi, K. Serradell, O. Tintó, X. Yepes

16/11/2021

EC-Earth Consortium General Assembly

Outline

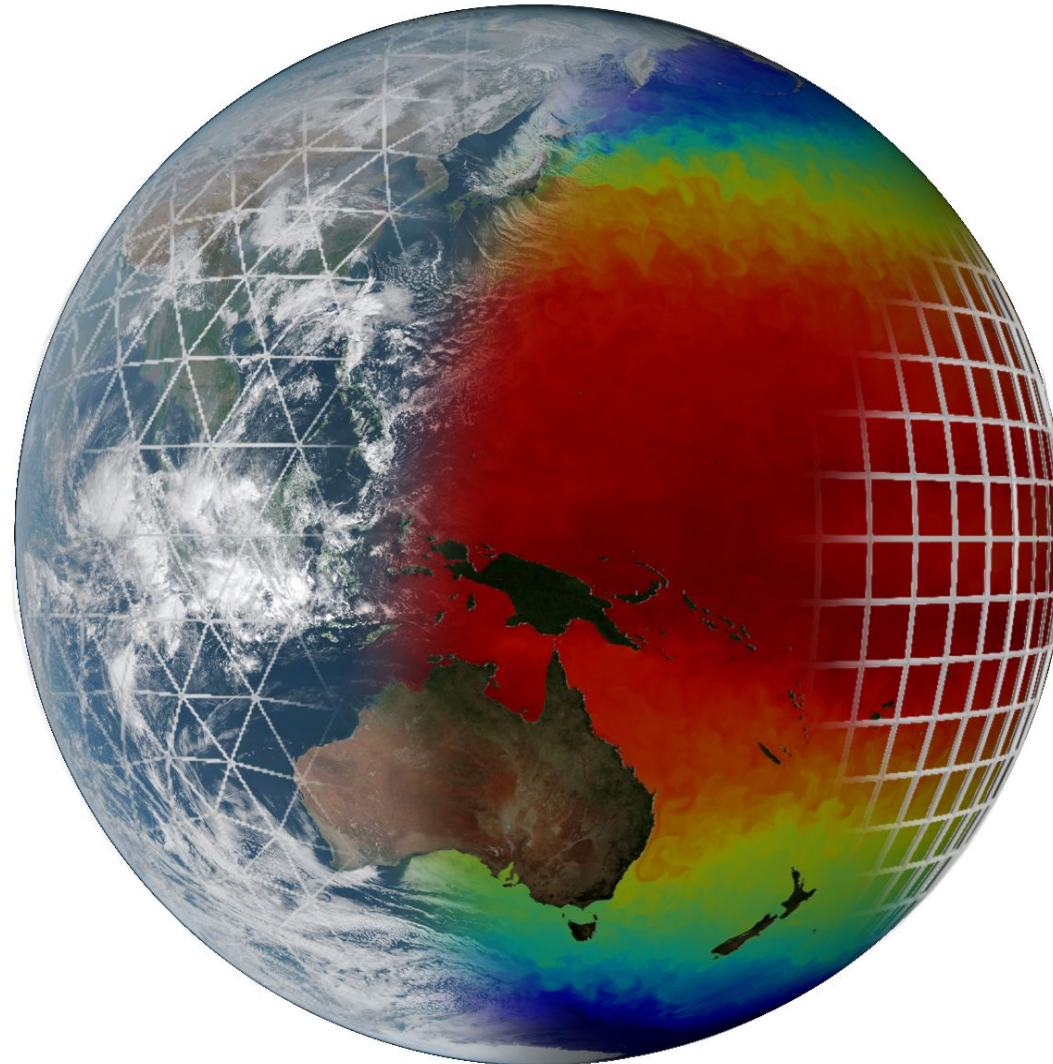
- **EC-Earth**
- The **coupled pre-Exascale demonstrator**
- The **new** pre-Exascale VHR-GCM configuration

The EC-Earth GCM model



Atmosphere:

IFS



Ocean - ICE:
NEMO - LIM

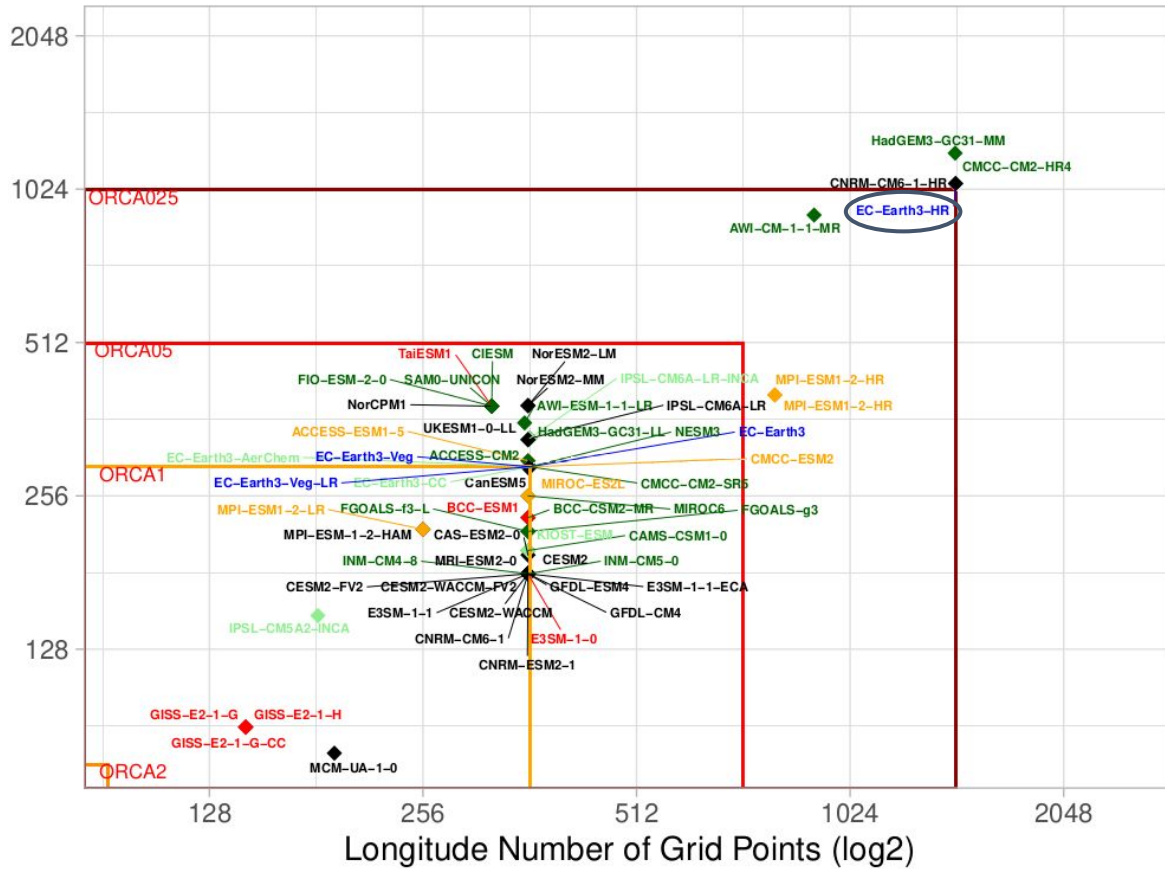


Coupler:

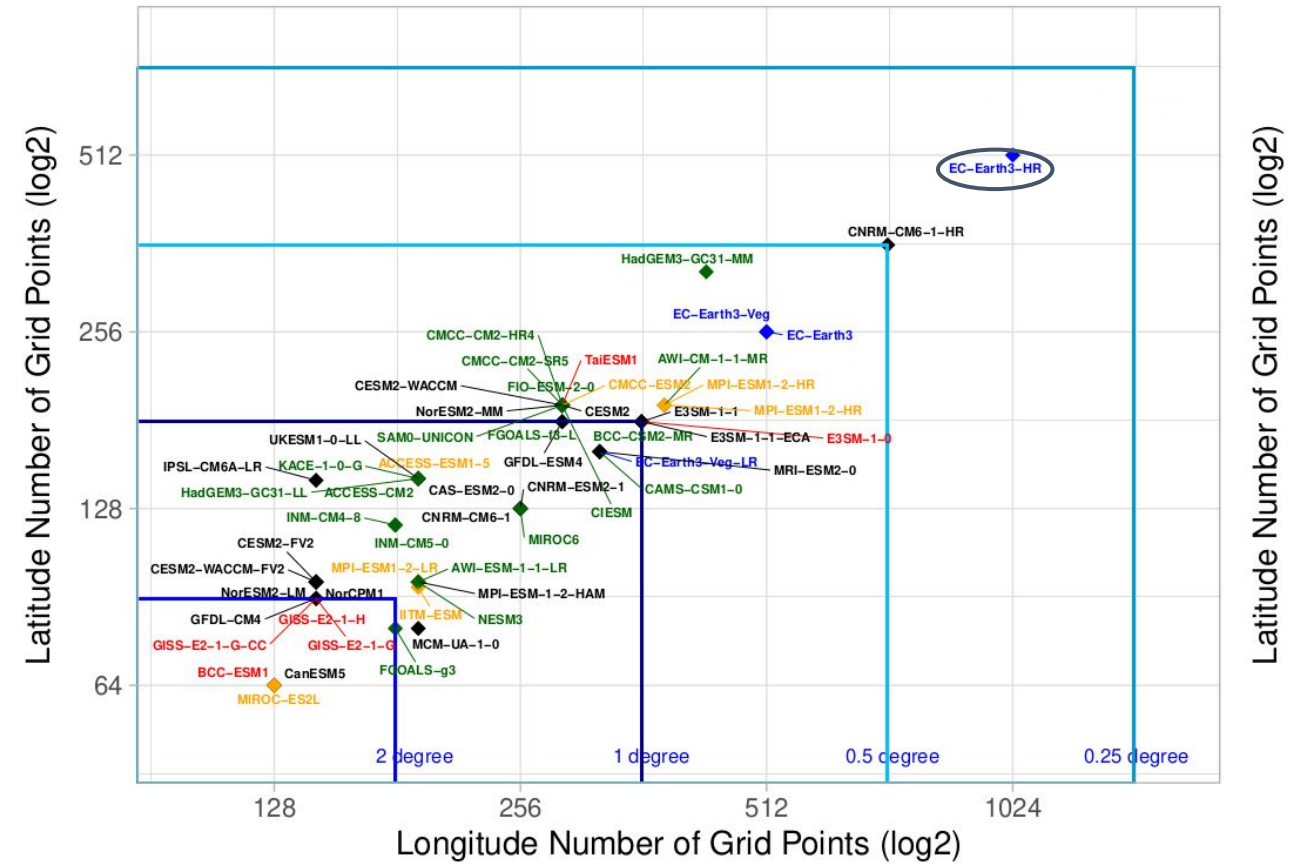


Resolution in climate models

CMIP6 Ocean resolution



CMIP6 Atmosphere resolution



EC-Earth 3 coupled ~10 km

ESiWACE: EC-Earth ~10km coupled demonstrator

- **IFS** cycle 36r4 for **atmosphere**
 - T1279L91: ~16 km grid point distance, **2.1 M** grid points
- **NEMO-LIM3** v3.6 for **ocean & sea-ice**
 - ORCA12L75: ~9 km grid point distance, **13.2 M** grid points*
- Total 3D space points: **1,181kM vertices**

EC-Earth 3 - T1279-ORCA12 in MareNostrum4

Operational global, coupled ~10 km simulations:

- EC-Earth 3.2 (IFS36r4 + NEMO 3.6 + OASIS3-MCT)
- 4,512 MPI tasks - 0.44 SYPD, 160 SDPD



100 year exp
~25M computing hours,
227 days



EC-Earth 3 - T1279-ORCA12: production runs

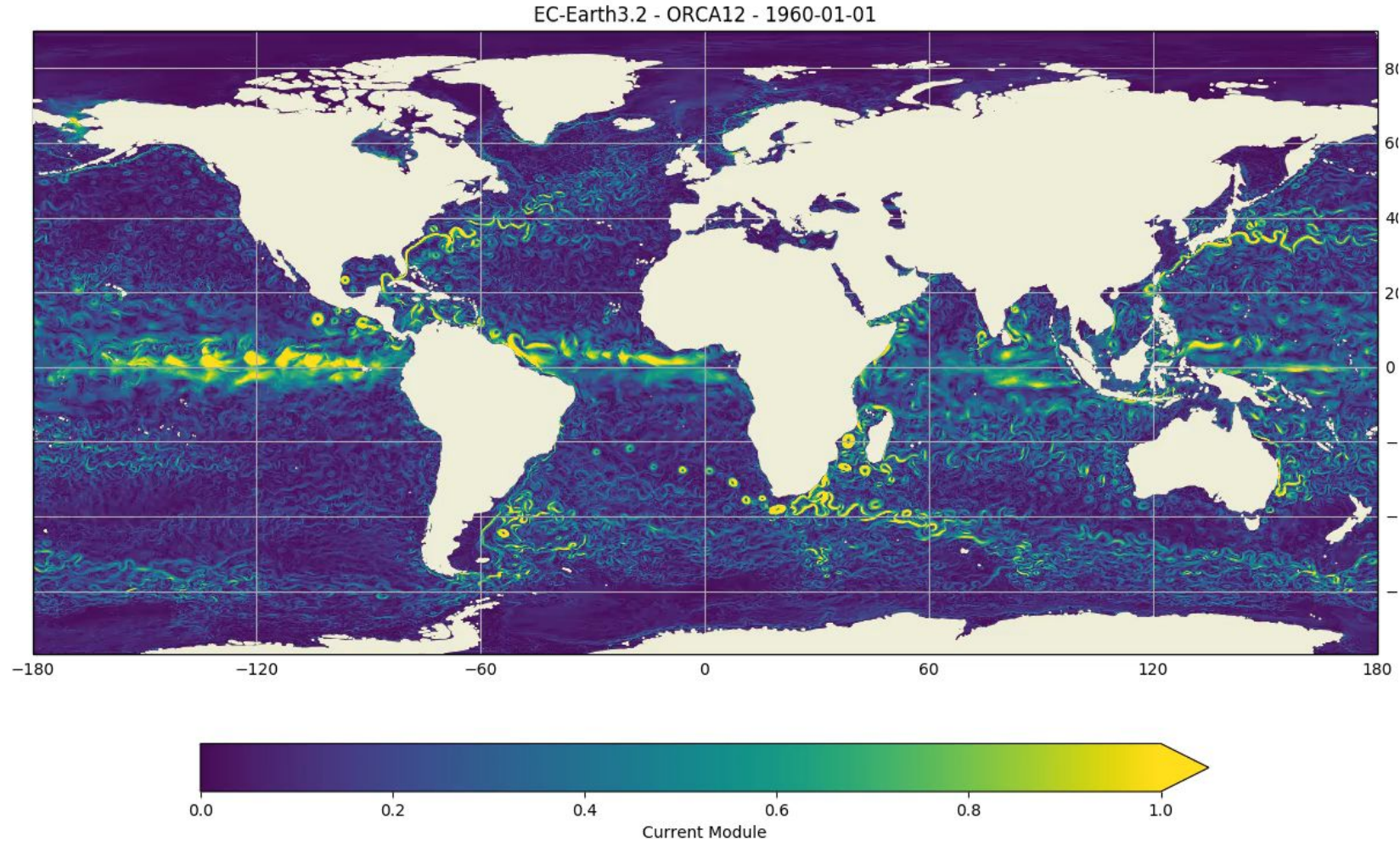
The logo for the PRIMAVERA project, featuring the word "PRIMAVERA" in a bold, black, sans-serif font. The letter "V" is partially obscured by a yellow semi-circle.

- **PRIMAVERA** is a **Horizon 2020** project which aims to develop a **new generation of advanced and well-evaluated high-resolution global climate models**, capable of simulating and predicting regional climate with **unprecedented fidelity**, for the **benefit** of governments, business and society in general.

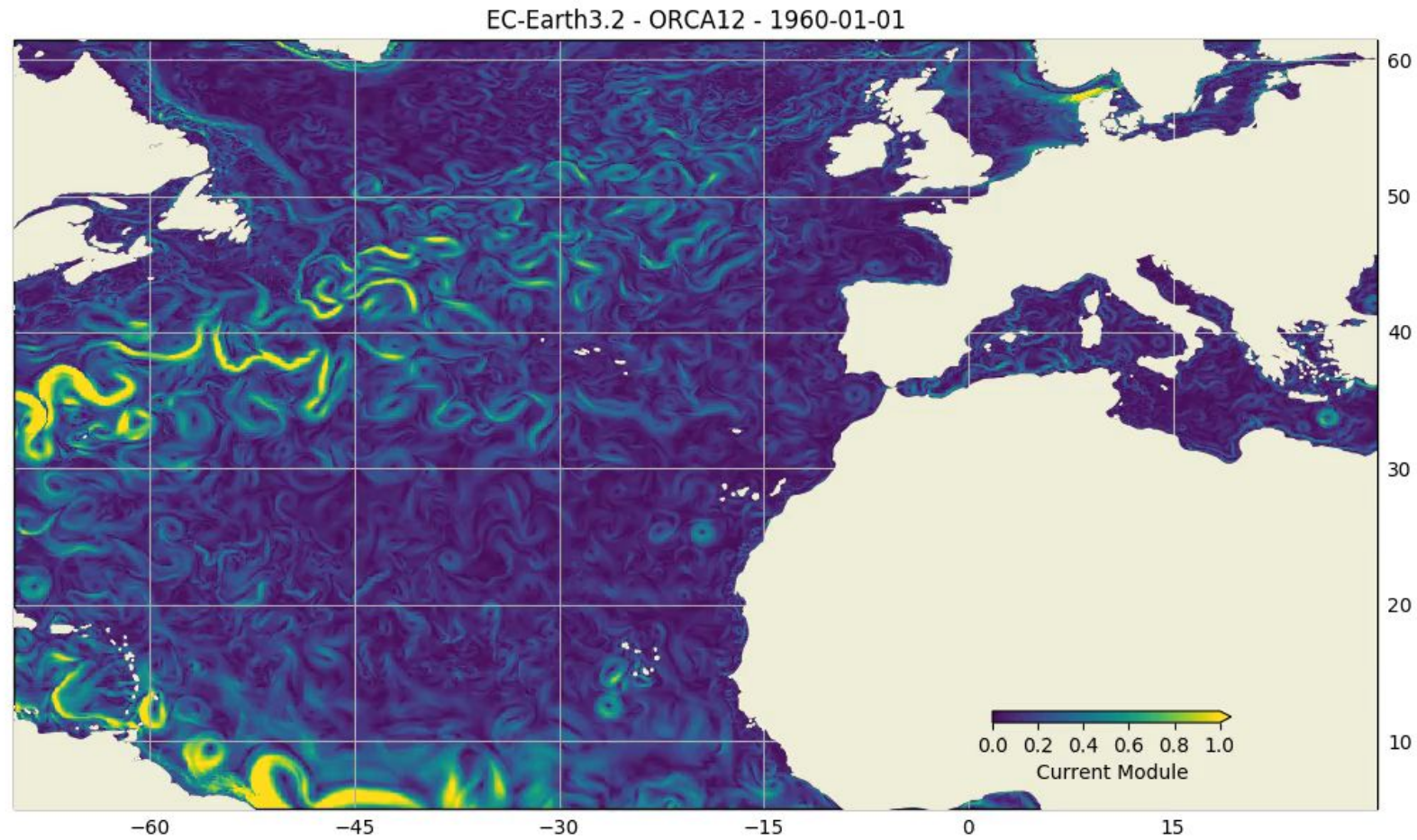
The logo for the High Resolution Model Intercomparison Project (HighResMIP), featuring the words "HIGHRESMIP" in a bold, black, sans-serif font. The "RES" is smaller and positioned between "HIGH" and "MIP".

- The **High Resolution Model Intercomparison Project (HighResMIP)** is a **CMIP6** endorsed MIP that applies, for the **first time**, a **multi-model approach** to the systematic investigation of the **impact of horizontal resolution**.

EC-Earth 3 - T1279-ORCA12: production runs



EC-Earth 3 - T1279-ORCA12: production runs



EC-Earth 3 - T1279-ORCA12 in MareNostrum 4

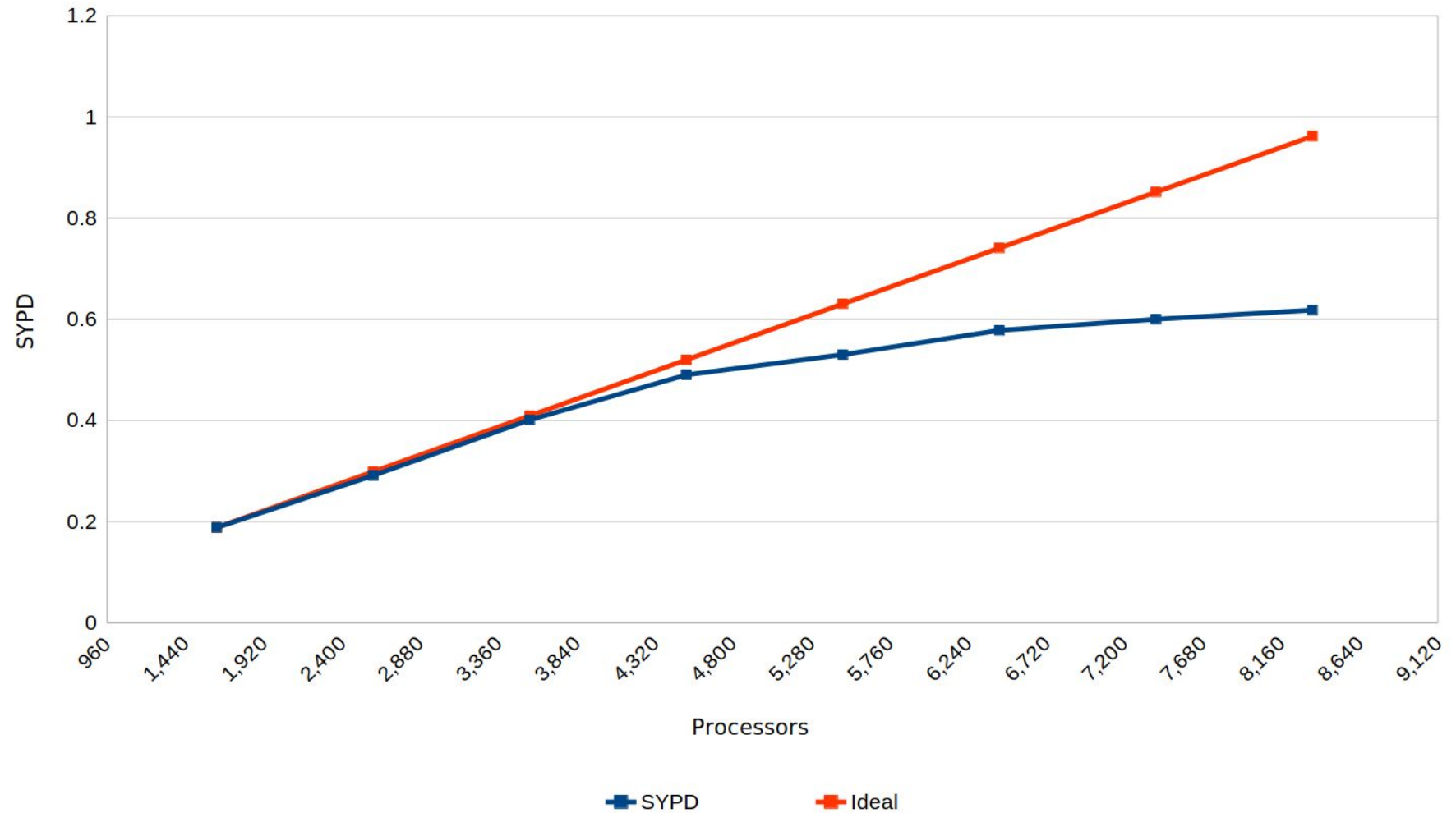
Benchmark scaling

Reduced output: ocean monthly means & 6-hourly atmospheric variables

Timestep: 6 min. (atm. & oce.)

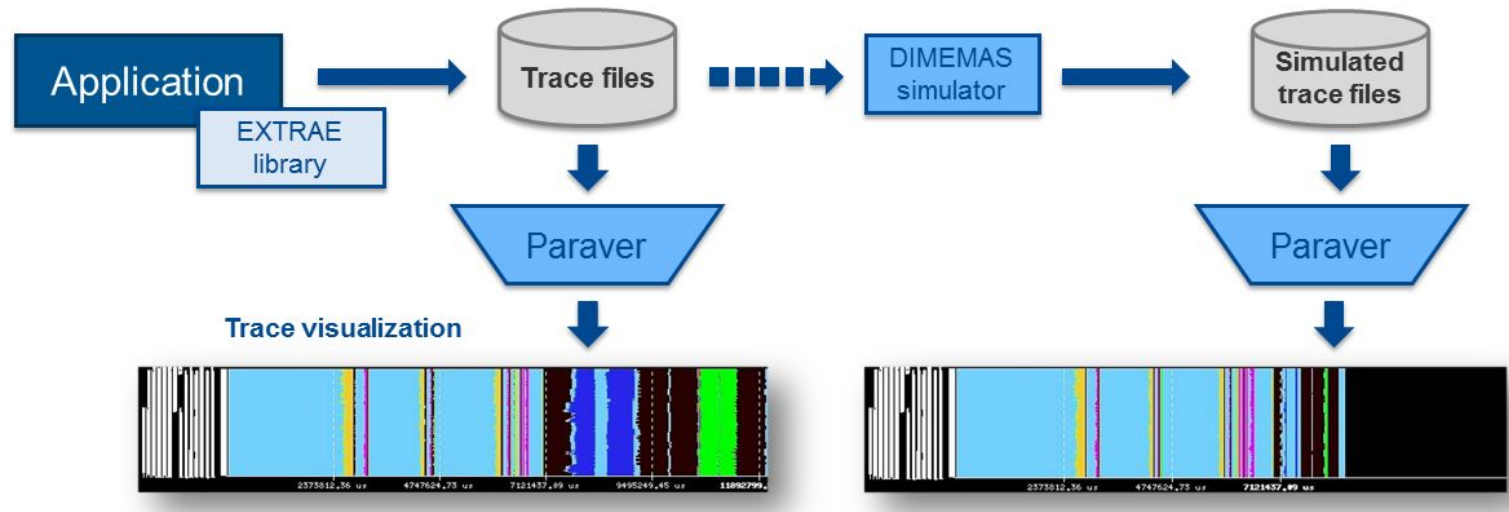
Coupling freq.: 12 min (atm-oce) and (oce-ice).

T1279-ORCA12 scalability at MareNostrum IV

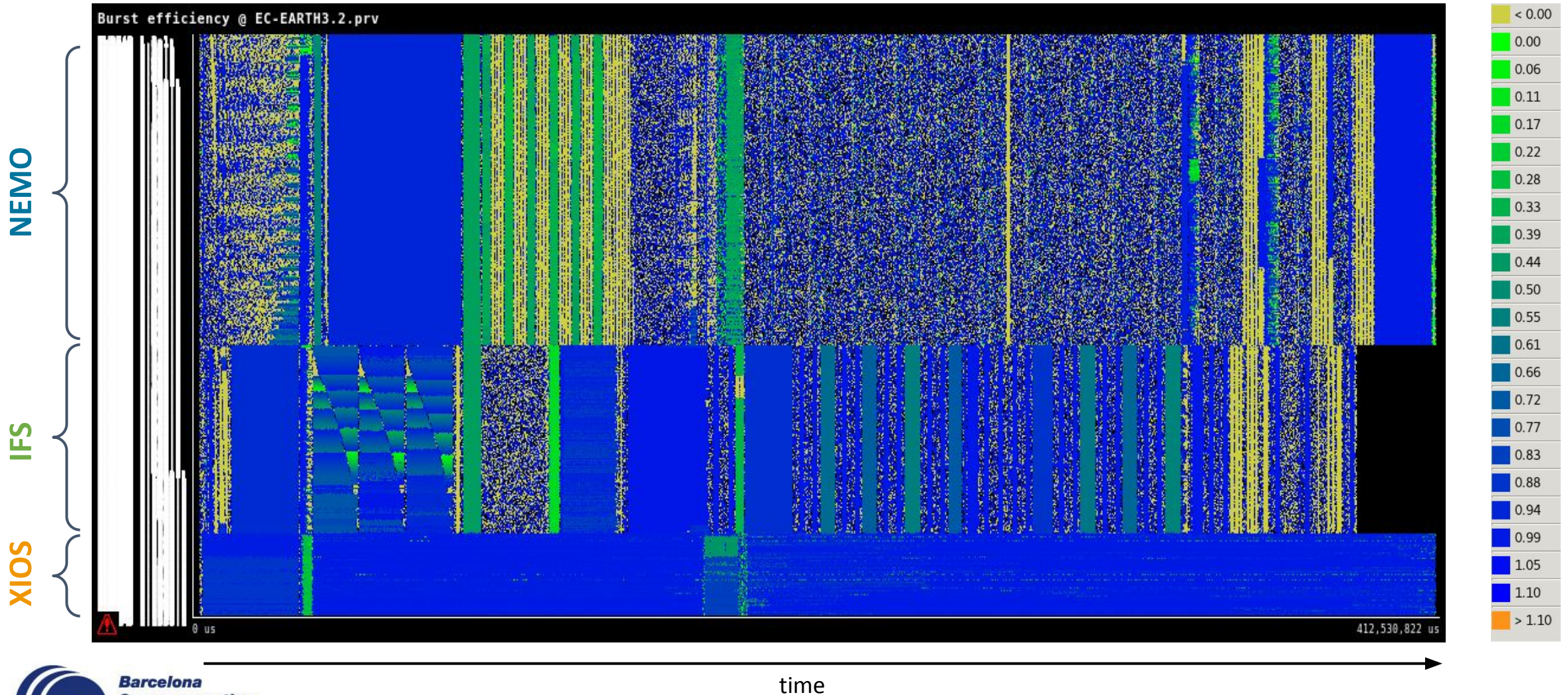


Performance analysis

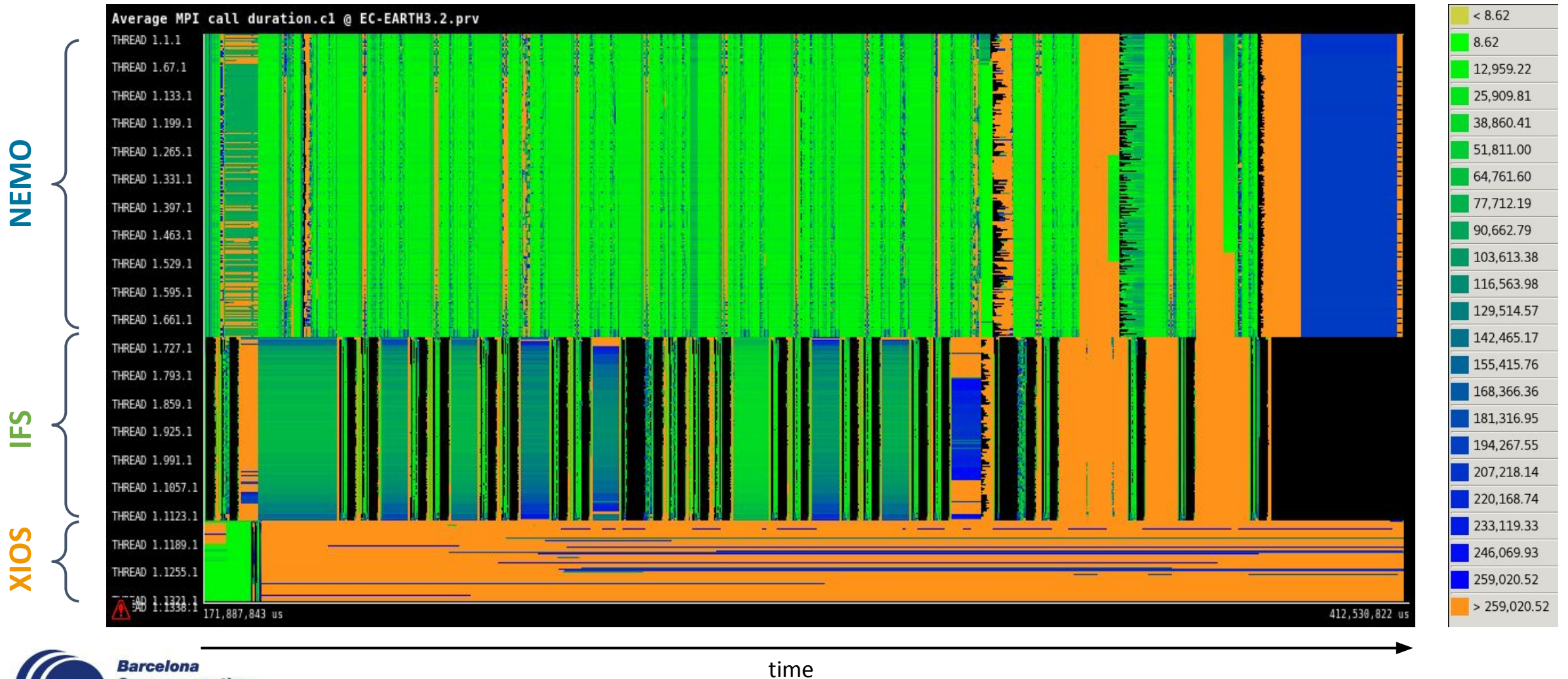
- **Extræe:** Library to generate trace files
- **Paraver:** Trace visualization and analysis
- **Dimemas:** Message passing simulator



EC-Earth - T1279-ORCA12: Performance analysis



EC-Earth - T1279-ORCA12: Performance analysis



EC-Earth 3 - T1279-ORCA12: Main bottlenecks

- **I/O overhead** → Implement asynchronous I/O
- **Sea-ice scalability** → Reduce **global** communications
- **Legacy atmospheric model (2010)** → Update **IFS** to newest cycle, using octahedral grid

ESiWACE 2: EC-Earth coupled ~10 km production-mode

- **I/O overhead** → Implement asynchronous I/O
- **Sea-ice scalability** → Reduce **global** communications
- **Legacy atmospheric model (2010)** → Update **IFS** to newest cycle, using octahedral grid



esiwace²
CENTRE OF EXCELLENCE IN SIMULATION OF WEATHER
AND CLIMATE IN EUROPE



> 1 SYPD

~~0.45 SYPD~~

ESiWACE 2: EC-Earth coupled ~10 km production-mode

- Develop **infrastructure** for production-mode configurations

ESiWACE 2: EC-Earth coupled ~10 km production-mode

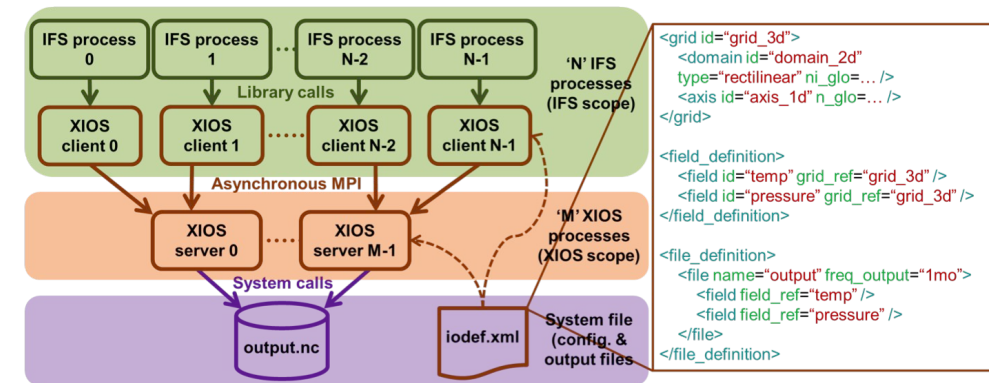
- Develop infrastructure for production-mode configurations

- Coupling infrastructure (OASIS)

- Improvement of I/O (XIOS)


- NEMO for high-resolution

- Infrastructure for high-resolution data



XIOS integration into OpenIFS (X. Yepes)

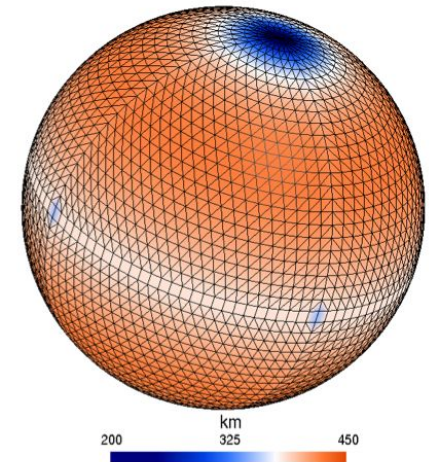
ESiWACE 2: EC-Earth coupled ~10 km production-mode

- Develop **infrastructure** for production-mode configurations
- Develop production-mode **configurations** 
- Port models to **pre-exascale EuroHPC systems**

EC-Earth coupled ~10 km production-mode

Main assets

- Brand **new** **ESM: EC-Earth 4**
 - **OpenIFS cycle 43r3** (2020)
 - **NEMO v4.0.2** (2019) (incl. **SI3** sea-ice model)
 - **OASIS3-MCT 4**
- **Common** asynchronous **I/O server** (XIOS v2.5)
- **Octahedral reduced** gaussian grid for OpenIFS
- Possibility to **switch** numeric **precision**



N24 octahedral Gaussian grid

EC-Earth coupled ~10 km production-mode

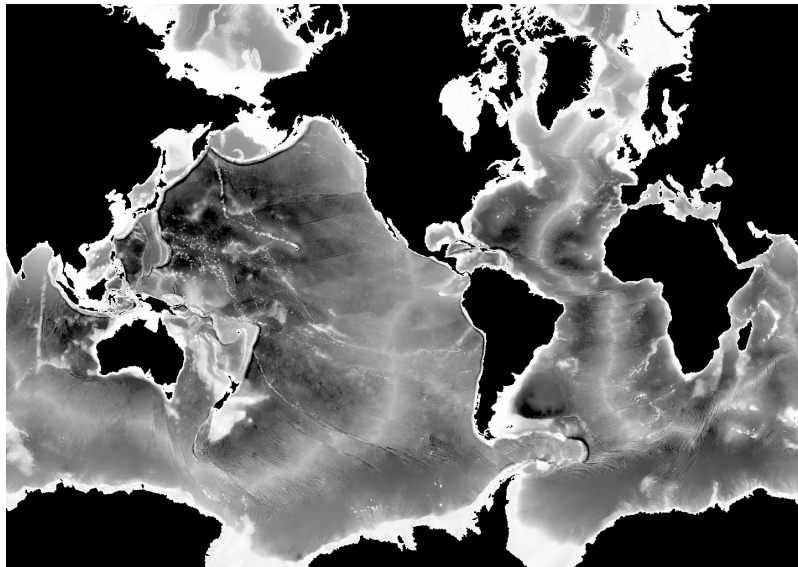
ESiWACE2:  VHR coupled demonstrator

- **OpenIFS** cycle 43r3 for **atmosphere**
 - Tco639L91: ~16 km grid point distance, 1.66 M grid points
- **NEMO-SI3** v4 & SI3 for **ocean & sea-ice**
 - ORCA12L75: ~9 km grid point distance, **13.2 M** grid points*
- Total 3D space points: **1,141kM vertices**



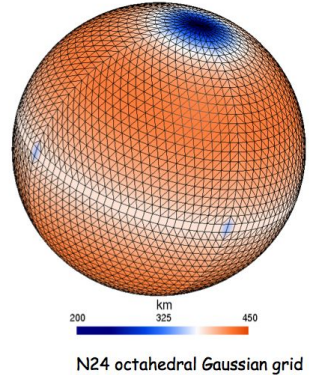
Tco639-ORCA12 configuration development

ORCA12 inspired from EC-Earth 3 T1279-ORCA12. Namelist “tuning” for NEMO4.



ORCA12 bathymetry

Tco639 configuration and **initial conditions**.



OASIS coupler grids, masks and areas information using the **OCP¹** tool.

OASIS remapping weights generated in parallel (OpenMP)².

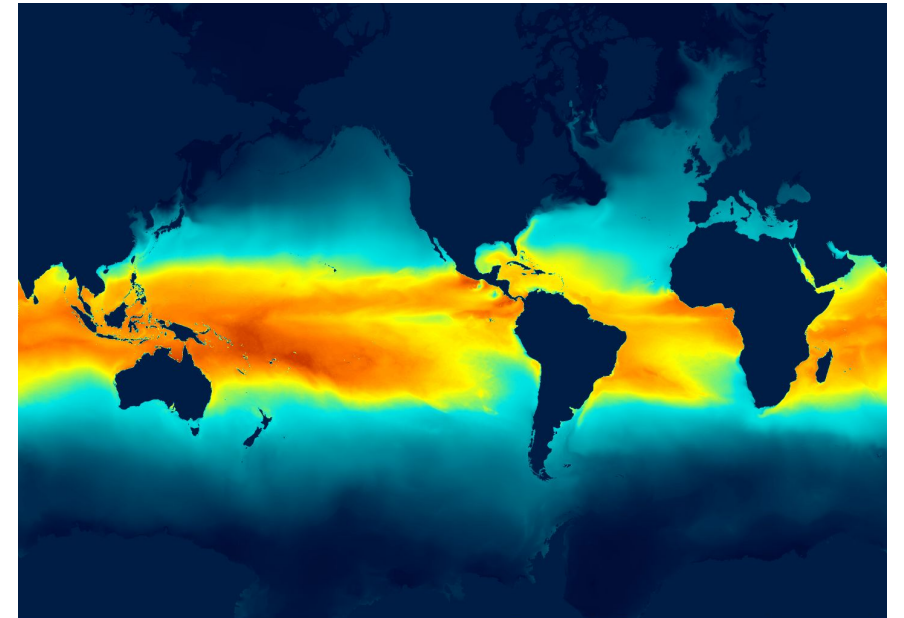


¹ <https://github.com/JanStreffing/ocp-tool>

² OASIS3-MCT4 new feature

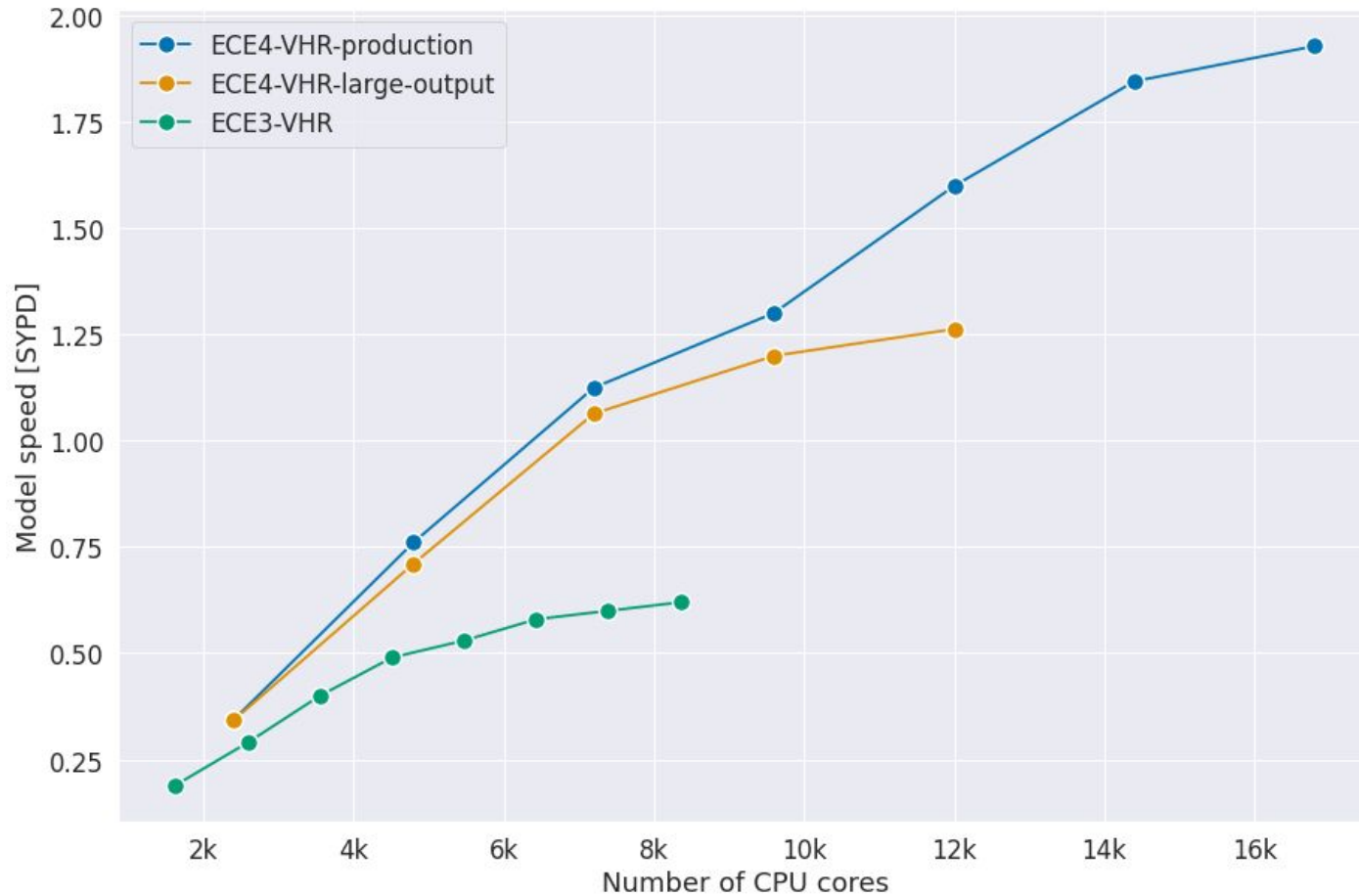
The creation process

- **Deployment** at the development and testing platform (MareNostrum4).
- NEMO (ORCA12) and OpenIFS (Tco639) **initial configurations**.
- Generation and testing of **coupling remapping weights**.
- **Test** runs. Test and **tune output** generation.
- **Fine tuning** of (Ocean) model parameters.
- **Spinup**, generation of initial conditions.
- Load **balance** and **scalability** exercise.
- Performance study + optimizations.
- **Final deployment** (pre-Exascale).



Sea-surface temperature after 1 month

Tco639-ORCA12 in MareNostrum 4



ECE3: TL1279-ORCA12

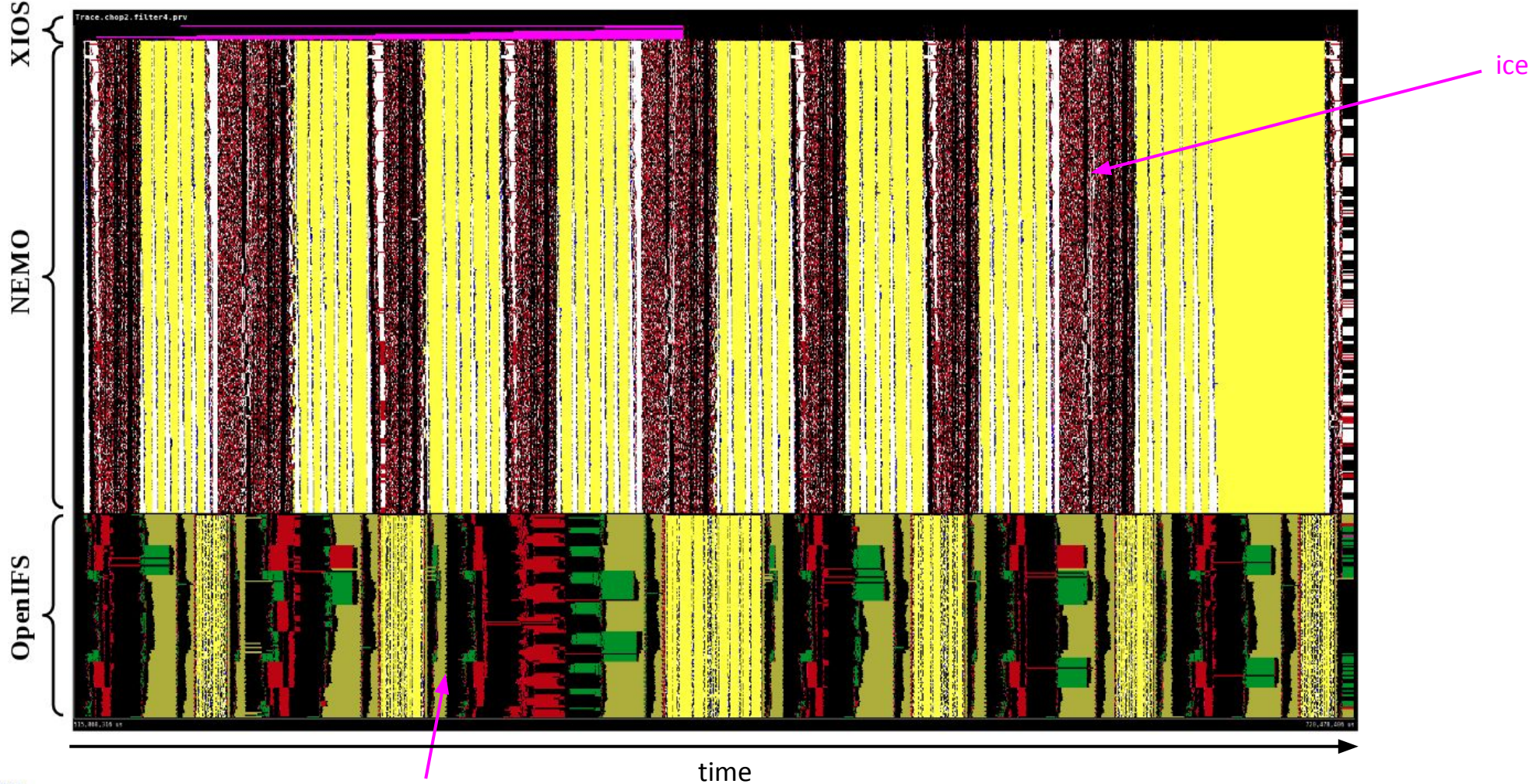
ATM: 360s, **OCE: 360s**, ICE: 720s, **CPL: 720s**

ECE4: Tco639-ORCA12

ATM: 360s, **OCE: 240s**, ICE: 720s, **CPL: 3600s**

- **Production:** Monthly output (6-hourly and daily averages)
- **Large output:** 3-hourly output

EC-Earth - Tco639-ORCA12 performance analysis



Technical take-home messages

- **Parallelizing** the **remapping weights** creation **saves** a lot of **time**.
 - **Independent** process for each pair of source-target grid.
- MareNostrum4 (OmniPath): **Open MPI** more **robust** than **Intel MPI**.
- XIOS: **parallel I/O** has a significant **overhead**. Multiple-file fairly efficient.
- OASIS: **Initialization** time increases with the number of processes (need to **tune** the remapping search method)
- NEMO: Using EN4 T&S. Need of a **spin-up** to **increase the timestep**.
- Properly **distributing** resources to handle **memory** needs.

Conclusions

- **First coupled ~10km** configuration developed within ESiWACE:
 - Developed and shared among **EC-Earth consortium** partners
 - **Deployed and tested** in the **BSC** HPC systems
 - Used in **production** for **different** projects
 - Used to investigate **very-high resolution scalability** for coupled systems
- **~10 km production-mode** configuration developed within ESiWACE2:
 - Solves the most important **bottlenecks**. Uses **updated** model components
 - Will be deployed and tested in the **pre-Exascale** EuroHPC systems
 - Will allow running **efficient** VHR simulations with a **production throughput**



**Barcelona
Supercomputing
Center**
Centro Nacional de Supercomputación

Thank you!



esiwace
CENTRE OF EXCELLENCE IN SIMULATION OF WEATHER
AND CLIMATE IN EUROPE

The ESiWACE project has received funding from the European Union's Horizon 2020 research and innovation program under grant agreement No 675191

This material reflects only the author's view and the Commission is not responsible for any use that may be made of the information it contains.

miguel.castrillo@bsc.es

Tco639-ORCA12 in MareNostrum 4

