

Best practices to tailor adaptation citizen engagement initiatives to specific objectives

Eulàlia Baulenas, Sam Pickard
Barcelona Supercomputing Center
eulalia.baulenas@bsc.es / samuel.pickard@bsc.es

Human geographies of climate change adaptation
University of Bergen, May 2024



Funded by
the European Union



**Barcelona
Supercomputing
Center**

Centro Nacional de Supercomputación





**Barcelona
Supercomputing
Center**
Centro Nacional de Supercomputación

BSC

**Earth
Systems**

Services

Knowledge Integration Team (KIT)

What do we do?

We co-design climate, air quality and health resilience services, while facilitating knowledge exchange and technology transfer of state-of-the-art research at local, national, and international levels.

Engagement &
knowledge co-production
Dissemination
Operationalisation
Science communication
& outreach
Policy engagement
Services evaluation
User experience
& product design



Generalitat de Catalunya
**Departament de Recerca
i Universitats**



UNIVERSITAT POLITÈCNICA
DE CATALUNYA
BARCELONATECH



UNIÓN EUROPEA
Fondo Europeo de Desarrollo Regional



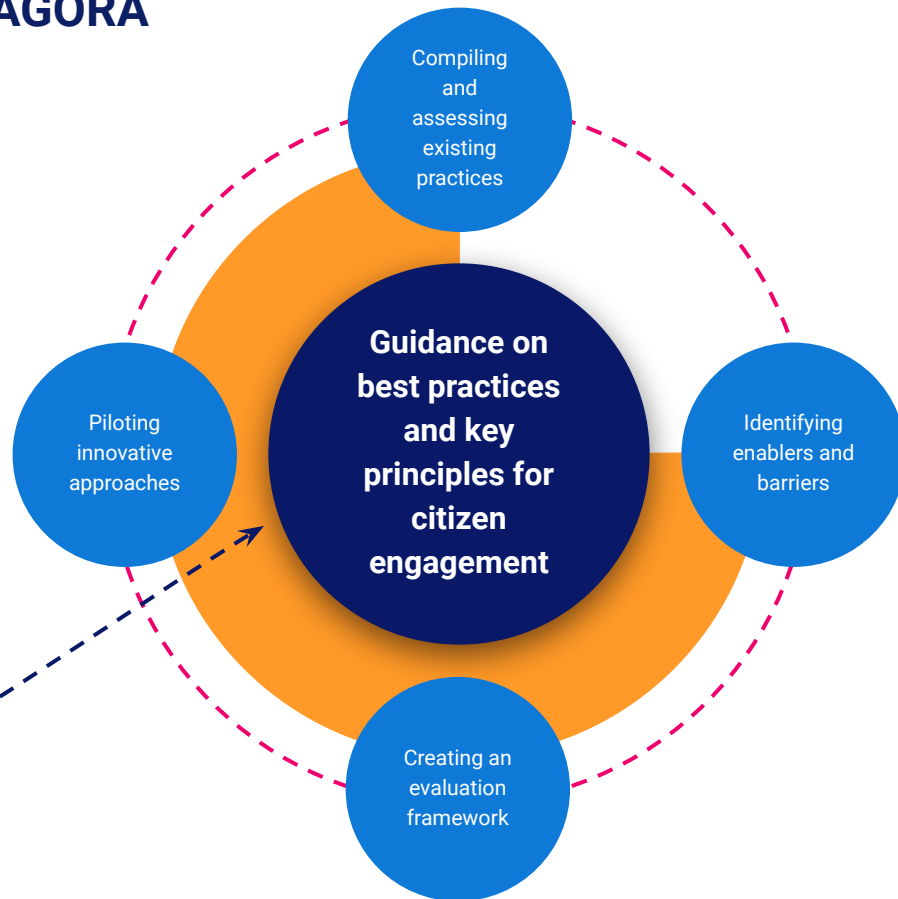
A **Gathering place to cO-design and co-cReate Adaptation** is a project aimed at supporting the Mission of Adaptation to Climate Change by actively **involving communities and regions** in climate actions, fostering resilience, and promoting societal transformation.



Citizen engagement research in ÀGORA

ÀGORA will provide a comprehensive package of digital tools and **co-developed frameworks**.

These tools and frameworks will facilitate collaboration and information exchange among citizens, civil society organisations, academics, experts, policymakers, entrepreneurs, and other relevant actors.

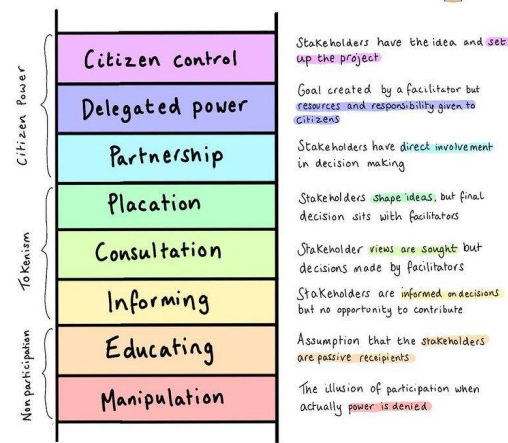


1 minute introduction to CEIs

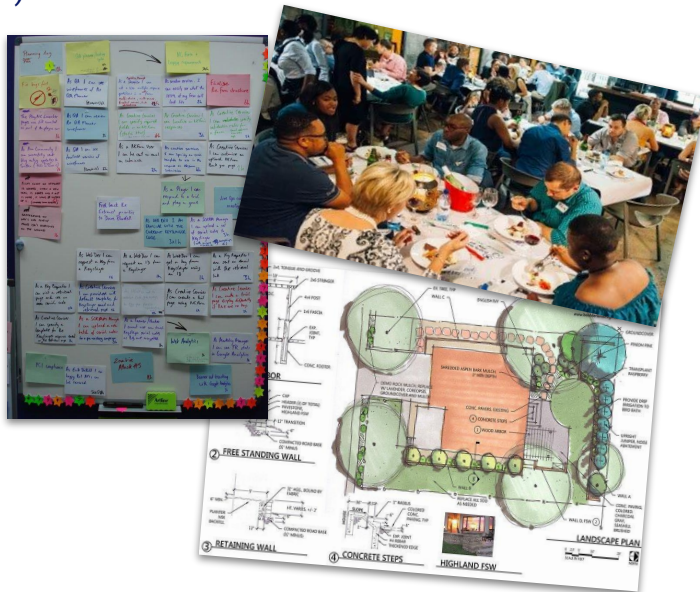
- Extremely fuzzy boundaries
- Enormous range of diversity
- Design (and implementation) can influence outcomes



Ladder of Participation (Arnstein, 1969)



Drawn by Johana Gomez



Research, practice, and synthesis of decades of CEI experiences

JOURNAL ARTICLE

Evaluating Public-Participation Exercises: A Research Agenda

Gene Rowe and Lynn J. Frewer

Science, Technology, & Human Values

Vol. 29, No. 1, November 2004, pp. 512-552 (40 pages)

Published by Sage Publications, Inc.



participation, and the variety of ways (mechanisms) in which it is operationalized, will be discussed. The article then focuses on the crucial issue of how one determines that a particular participation mechanism or exercise has been successful. In addressing this issue, the dearth of high-quality empirical evaluations will be highlighted, along with the lack of any comprehensive framework for conducting such evaluations.



Advanced Review | Open Access | CC BY-NC-ND

Public participation, engagement, and climate change adaptation: A review of the research literature

Stephan Hügel | Anna R. Davies

First published: 27 March 2017

5 CONCLUSION

This review has examined the corpus of research captured in a bibliographic database which combines attention to public participation and citizen engagement with climate change adaptation, and suggests an expansion of the research agenda to include the following issues:

1. How public participation in climate change adaptation is addressed in gray literature and policy documents;
2. Patterns of public participation in relation to adaptation with respect to drought, changing patterns of disease and agricultural viability and also other extreme weather events beyond flooding;
3. The nature of public participation for climate change adaptation in local adaptation policies and community practices;
4. The extent, form, and findings of evaluation efforts with respect to the impacts of extending public participation in climate change adaptation;
5. The geographical distribution of both funding for research and the locus of research.

OECD Public Governance Reviews OECD Guidelines for Citizen Participation Processes

VALORISATION POLICIES

CODE OF PRACTICE ON CITIZEN ENGAGEMENT

COMMISSION RECOMMENDATION



"Strong citizen engagement is key to accelerating the uptake of innovative solutions and to developing new technologies, products, and services that better respond to people's needs. This Code, developed with practitioners in the field, will support all research and innovation actors in successful citizen engagement for knowledge valorisation."

Barbara Vanessa Commission for Innovation Research, Culture, Education and Youth

Citizen engagement for knowledge valorisation refers to the active involvement of citizens, citizens groups, civil society organisations, and communities in turning knowledge and research results into innovative solutions, to help exploit market opportunities and to inform policy-making. The Code of practice supports all R&I actors in building an enabling environment and will help establish participatory processes and practices for sustainable citizen engagement leading to create innovative, knowledge-based solutions that are better matching citizens' needs.

IN BRIEF

The Code of practice provides a review of evidence to inform the activities of citizens for contributing to innovative solutions. It supports the implementation of the Council Recommendation on the quality standards for knowledge valorisation.

The Code of practice benefits all R&I actors, such as universities and other higher education institutions, public and private research, innovation and technology organisations, research and technology infrastructures, businesses of all sizes, universities and other actors including citizens and communities that society and citizens groups, and intermediaries, knowledge and technology transfer intermediaries, innovation policy stakeholders, etc.

CITIZEN ENGAGEMENT SOLUTION BOOKLET

EU Smart Cities Information System

Context and purpose Pre-engagement On-the day Post-engagement



Franchises of organizers, facilitators, advisors



Facilitating empowerment requires enabling effective participation



Accountability and avoiding the "black-hole"



Sampling and communication strategies



Capacity building



Logistics



Trusted intermediaries



Engagement format

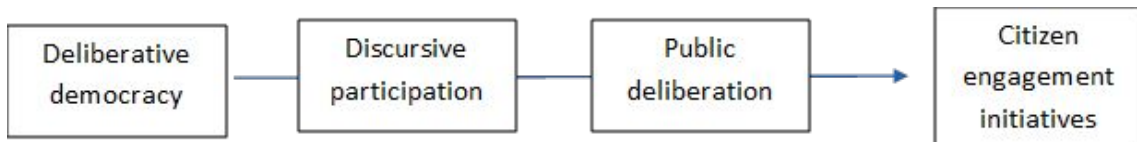


Bringing back to the community

Co-decision in the issue of concern, concepts of vulnerability, pondered decisions, evaluation criteria

Working definitions

Citizen engagement initiatives



Must:

- ☐ Include discourse with other citizens: actions of talking, discussing, debating, and/or deliberating, i.e., we expressly consider “talking” as a form of participation
- ☐ Focus on a local, national, or international issue of public concern; for AGORA: climate change adaptation action

Can:

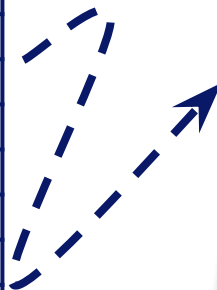
- ☐ Be linked to civic and political processes
- ☐ Occur through a variety of media (not only face-to-face exchanges)

Research Questions

- **What** components of engagement methodologies influence **which** indicators?
- How do these mechanisms work?
- How does context influence these (causal) mechanisms?

Mapping CEIs - from existing databases to a curated inventory

Name	Number of cases (relevant)	CEI Mapping Functionality
AdapteCCa.es	42 (7)	Basic
Bürgerat	~600 (unclear)	Basic
Cities profile	16 (unclear)	Basic
Citizen Engagement EU	90 (0)	Advanced
Citizen Engagement Navigator	52 (5)	Intermediate
Climate Adapt	129 (20)	Intermediate
Ecsite	49 (1)	Basic
KNOCA	~50 (all)	Basic
Mini-Publics Map	2170 (4)	Basic
OECD Deliberative Democracy Database	733 (4)	Advanced
Participatory Methods)	22 (0)	Basic
Participedia	2225 (~20)	Advanced
Politicize.eu	159 (9)	Intermediate



Citizen engagement initiatives - registration tool

Background Context
We are designed to invite you to register a Citizen Engagement Initiative (CEI) in the forthcoming Digital AGORA online database. This mapping exercise is part of a European Commission-funded research project called AGORA that seeks to actively involve communities and regions in climate actions providing a comprehensive package of digital tools and co-developed frameworks (<https://digitalagora.eu>). The Digital AGORA will include a searchable database of adaptation-focused CEIs around Europe, which we hope will facilitate knowledge sharing and will form the basis for our efforts to draw together the best practices on how to engage citizens in climate change adaptation themes.

Important Information
There is a very wide range of interpretations of Citizen Engagement Initiatives (CEIs), which are also sometimes known as Public Participation activities. We focus specifically on those participatory processes with citizens that are linked to matters of public concern on climate change adaptation and include any form of discursive interaction, such as talking, discussing, debating and deliberating.

How to include your CEI
This tool is designed to be manageable for data analysis and for searching for initiatives. Providing as much detail as possible will help us understand the universe of CEIs and help efforts to find your CEI. However, there may be sections of the tool that do not apply to your CEI. Please leave any non-applicable questions blank, and add any other information you think is relevant in the open field (the last question). On average, it takes around 20 minutes to add one CEI. We kindly ask that you add separate CEIs individually.

Data protection
If you would like any of your contact details to be published on the Digital AGORA platform along with the information about your Citizen Engagement Initiative, please provide them below. This data will be stored and monitored by the partners of the AGORA project and will not be used for further distribution or any other purpose than the one mentioned above.

If you have any questions, comments or concerns about the mapping tool, the AGORA project or our wider work on citizen engagement, please contact: Eulalia Baulenas or Sam Pickard (Barcelona Supercomputing Center) at eulalia.baulenas@bsc.es / samuel.pickard@bsc.es

1. Please provide some general details about the project:

Project name:

Location:

Country:

Short description:

(Clicking on 'next' indicates that you agree to the terms and conditions of the project)

<https://www.surveymonkey.com/r/CEImap>

Evaluating CEIs - AGORA's pathways to impact

1. **Relevant knowledge and action**

Knowledge and action align with the local context, policy priorities, and social dynamics, and enjoy support and acceptance among citizens, decision makers, researchers, and other stakeholders.

2. **Just participation**

Voices and participation of citizens and other stakeholders including the marginalized and disadvantaged are bolstered.


3. **Mutual learning**

Citizens, decision makers, researchers, and other stakeholders learn from one another.

4. **Improved collaboration**

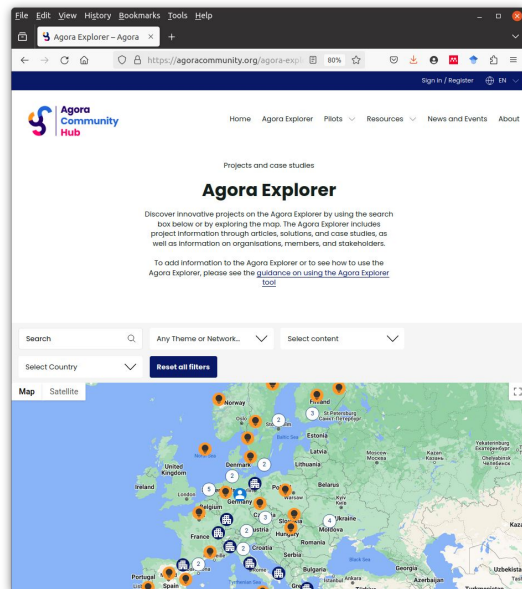
Partnerships are based on trust and respect among citizens, decision-makers, researchers, and other stakeholders.

Situating practices within the process and in relation to outcomes

		Evaluation framework key pillar			
		Locally-relevant knowledge and action	Achieving just representation and participation	Generating mutual learning	Producing improved collaboration
Engagement Phase	Context	<p>Which practices exist for stakeholder engagement?</p> <p>Where do they best fit on this matrix?</p> <p>(How) Can these stakeholder-engagement practices be tailored to citizen engagement?</p> 			
	Pre-engagement				
	On the day				
	Post-engagement				

Living documents on the Digital AGORA

CEI & Projects Explorer



Good Practices Matrix

		Evaluation framework key pillar			
		Locally relevant knowledge and action	Achieving just representation and participation	Generating mutual learning	Producing improved collaboration
Engagement Phase	Context	Which practices exist for stakeholder engagement?			
	Pre-engagement	Where do they best fit on this matrix?			
	On the day	(How) Can these stakeholder engagement practices be tailored to citizen engagement?			
	Post-engagement				

Evaluation framework key pillar

Generating mutual learning

Engagement Phase Pre-engagement

- Establish from the beginning that the CEI will be a place of mutual learning (not just exchange)
- Creating heterogenous work groups that are directed to consider diverse perspectives
- Embed the process in the local culture/networks with the aim of strengthening existing links and building relationships with community members
- Design mutual learning processes based on stakeholder- and citizen-identified needs
- Providing tangible examples of what is requested/involved in the mutual learning process

Closing remarks

- Continue building the CEI inventory → → →
- Expert interviews / surveys
 - (Interested? Email us...please!)
- Practitioner outreach
 - ICLEI EURESFO, EU JRC CoP
- Validation webinar
 - Autumn 2024
- Follow AGORA
 - www.adaptationagora.eu



<https://www.linkedin.com/company/adaptation-agora>

<https://twitter.com/AgoraAdaptation>

<https://www.facebook.com/profile.php?id=100090701292038>





Thank you

samuel.pickard@bsc.es / eulalia.baulenas@bsc.es

Coordinated by

