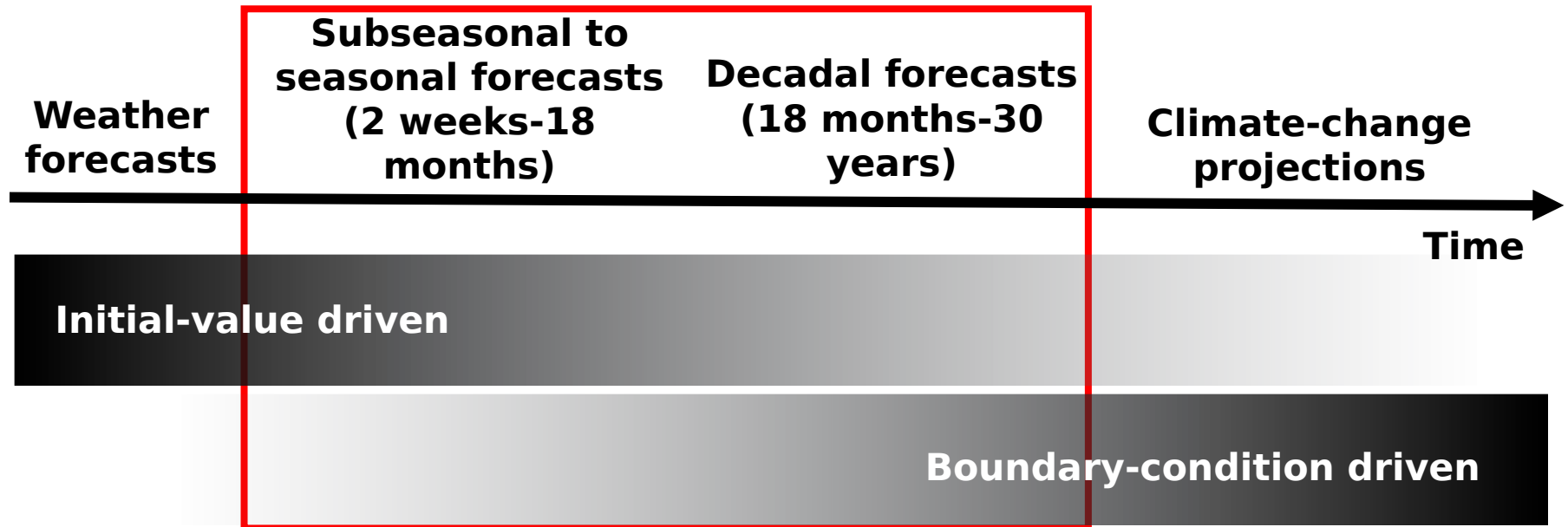


SPECS Climate Prediction for Climate Services

Louis-Philippe Caron
BSC-CNS, Barcelona, Spain

Climate prediction

Progression from initial-value problems with weather forecasting at one end and multi-decadal to century projections as a forced boundary condition problem at the other, with climate prediction (**sub-seasonal, seasonal and decadal**) in the middle. Prediction involves initialization and systematic comparison with a **simultaneous** reference.



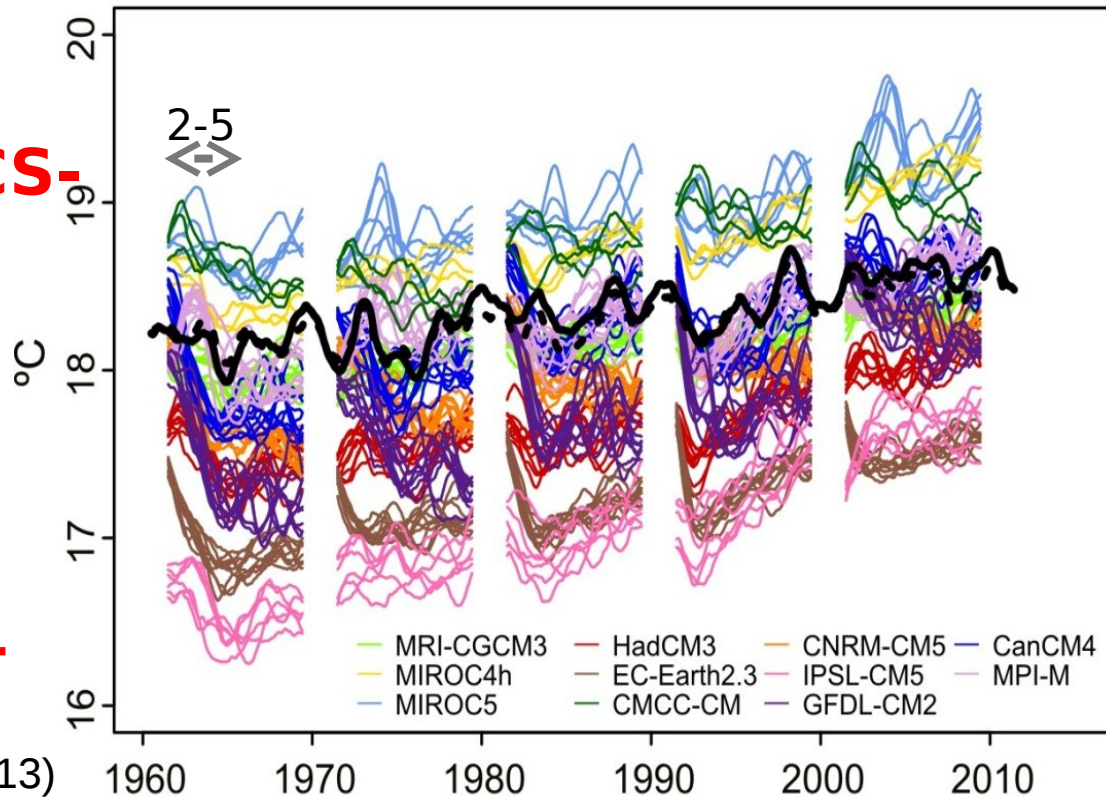
Adapted from Meehl et al. (2009)

Global mean near-surface air temperature over the ocean (one-year running mean applied) from CMIP5 hindcasts. Each system is shown with a different colour. NCEP and ERA40/Int used as reference.

Examples of shock, drift and large systematic error can be found.

**Joint SPECS-
PREFACE-
WCRP
Workshop**

**Barcelona
May 10-11**



IPCC AR5 WGI (2013)

What: to produce quasi-operational and actionable local climate information

Why: need information with improved forecast quality, a focus on extreme climate events and enhanced communication and services for RCOFs, NHMSs and a wide range of public and private stakeholders

How: with a new generation of reliable European climate forecast systems, including initialised ESMs, efficient regionalisation tools and combination methods, and an enhanced dissemination and communication protocol

Where: over land, focus on Europe, Africa, South America

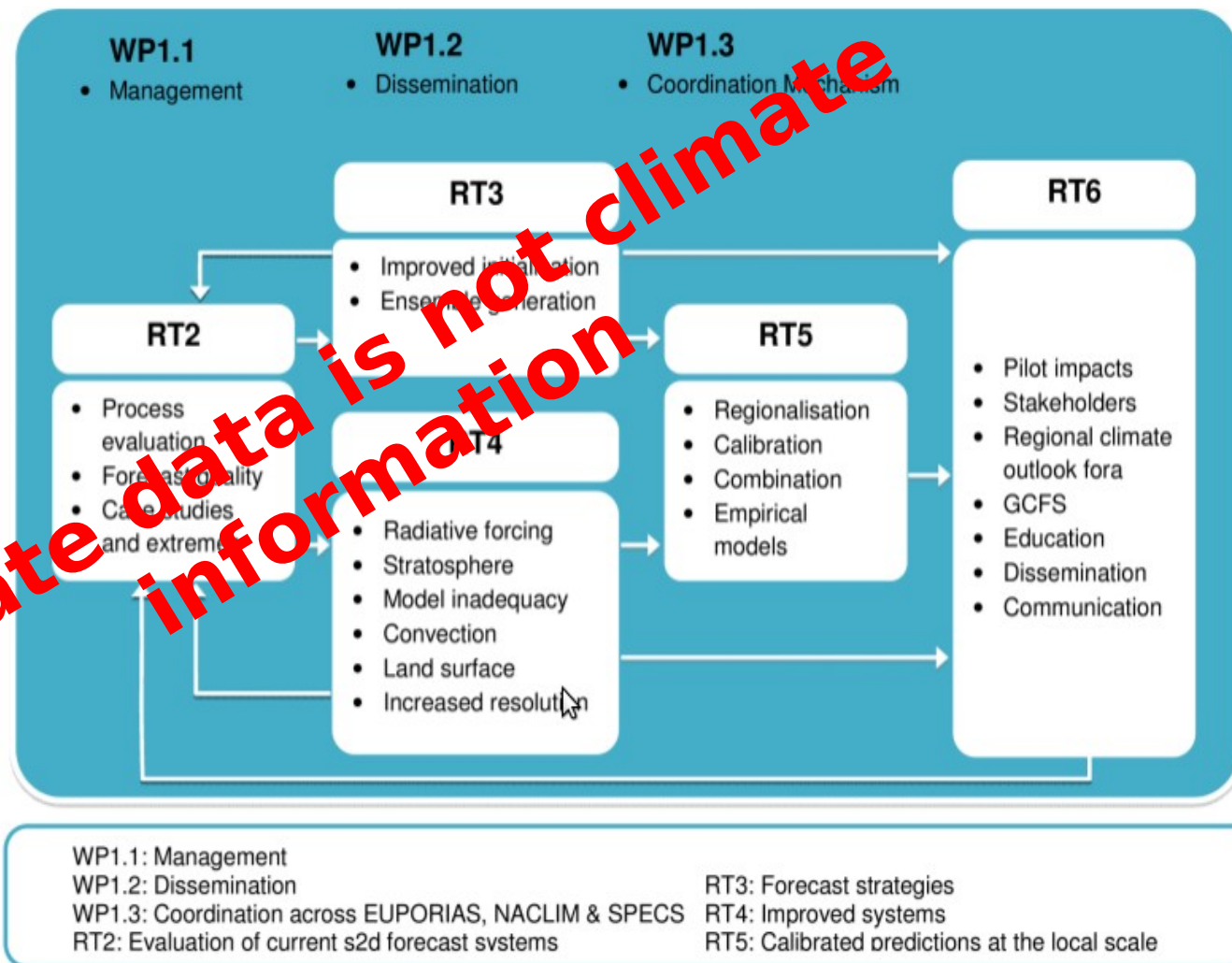
When: seasonal-to-decadal time scales over the longest possible observational period

<http://www.specs-fp7.eu>

Links to EUPORIAS/NACLIM, but also IS-ENES2, PREFACE, EUCLEIA, CLIPC,

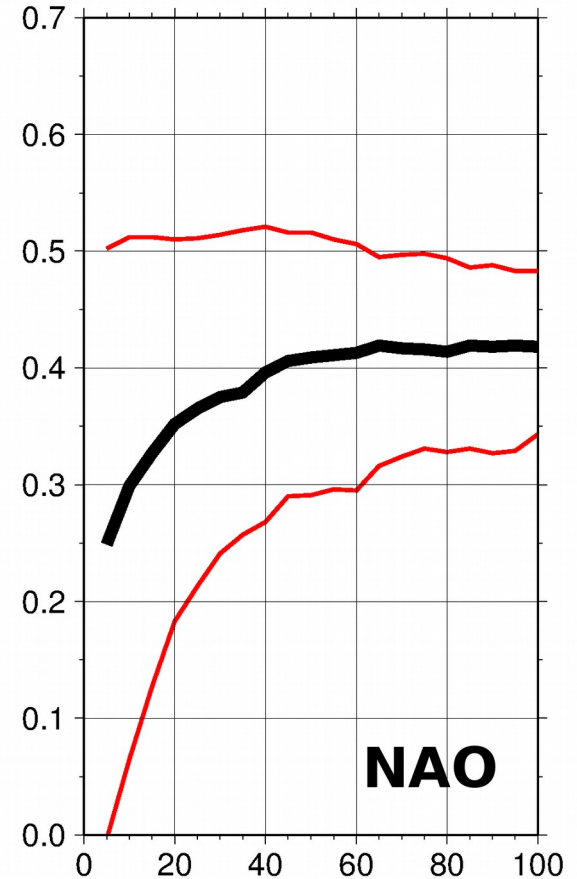
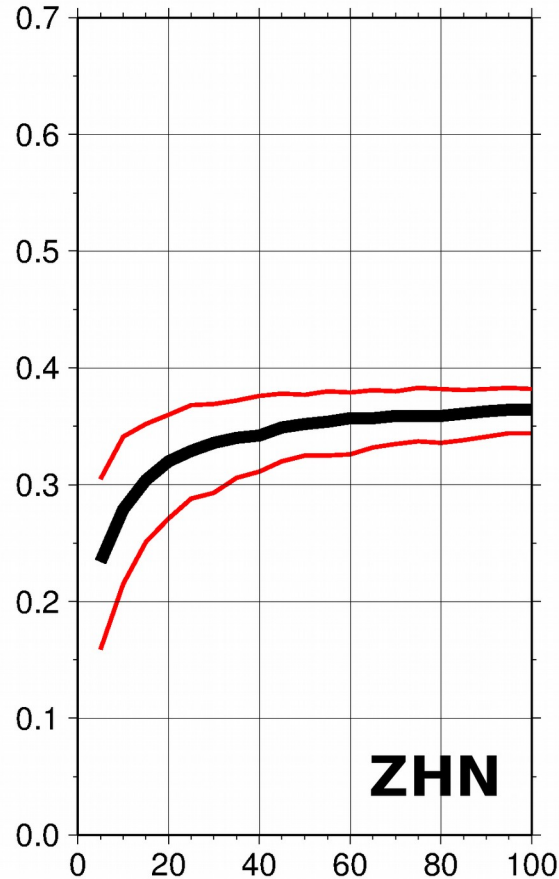
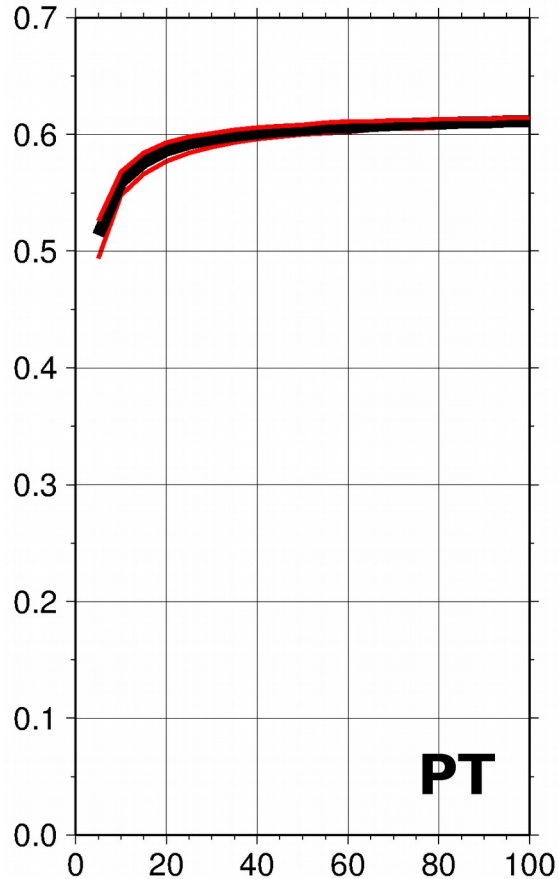
...

Forecast System	Project Partners
CNRM-CM5	CNRM, CERFACS
EC-Earth	KNMI, SMHI, IC3, ENEA
IFS/NEMO	ECMWF, UOXF
IPSL-CM5	CNRS
MPI-ESM	MPG, UniHH
UM	UKMET



No shortcuts: ensemble size

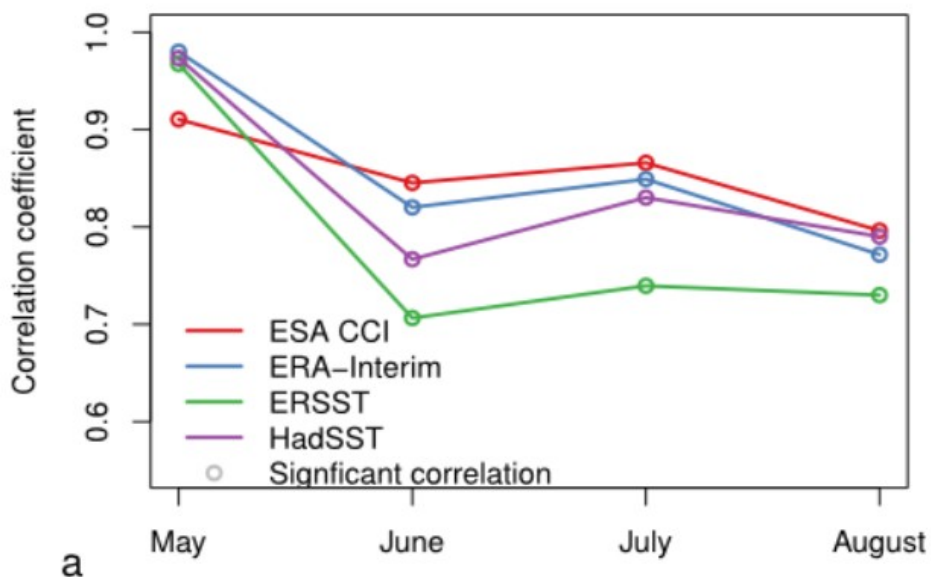
CNRM-CM's correlation for ensemble-mean predictions of DJF (one-month lead time) tropical precipitation, Northern Hemisphere Z500 and NAO as a function of the ensemble size. Red lines for 90% confidence interval.



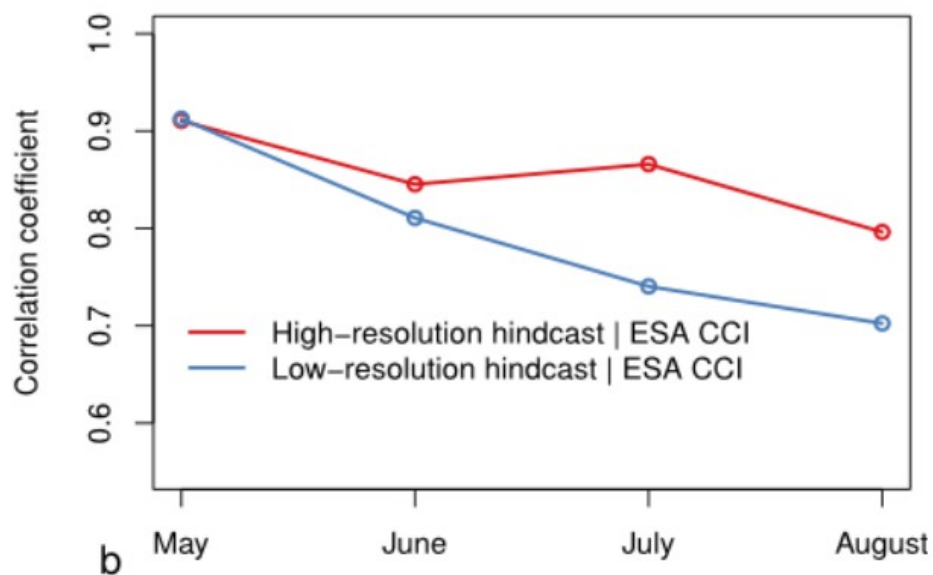
M. Déqué (Météo-France)

Predictions with EC-Earth3 started every May over 1993-2009 with ERAInt and GLORYS2v1 initial conditions, and internal sea-ice reconstruction.

Prediction skill ENSO: Different observations

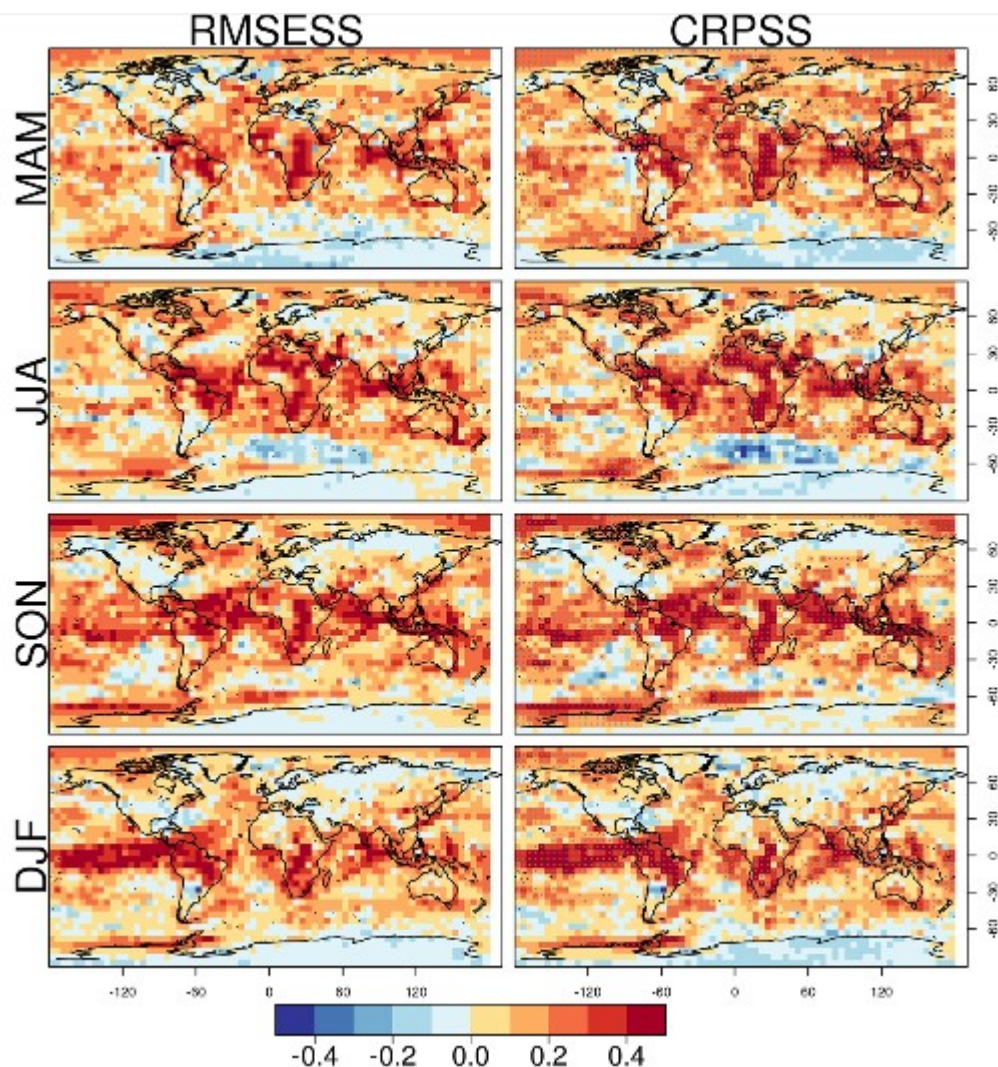


Prediction skill ENSO: Increase in resolution



Bellprat et al. (2015)

Empirical forecasts of one-month lead temperature (right panel) and precipitation using a wide range of observed predictors.



Geosci. Model Dev. Discuss., 8, 3941–3970, 2015
www.geosci-model-dev-discuss.net/8/3941/2015/
 doi:10.5194/gmdd-8-3941-2015
 © Author(s) 2015. CC Attribution 3.0 License.

Geoscientific
 Model Development
 Discussions



This discussion paper is/has been under review for the journal Geoscientific Model Development (GMD). Please refer to the corresponding final paper in GMD if available.

A global empirical system for probabilistic seasonal climate prediction

J. M. Eden¹, G. J. van Oldenborgh¹, E. Hawkins², and E. B. Suckling²

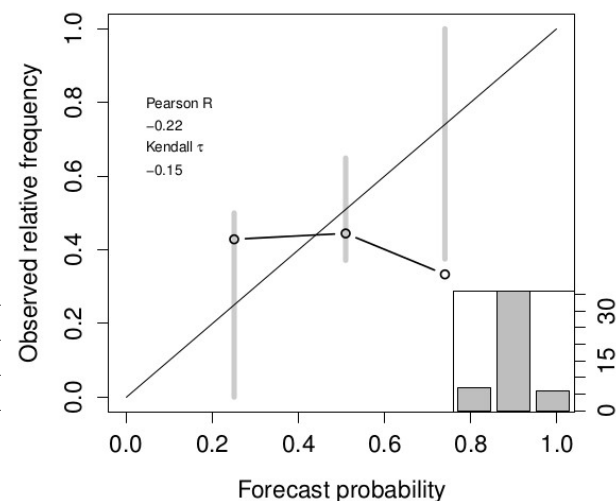
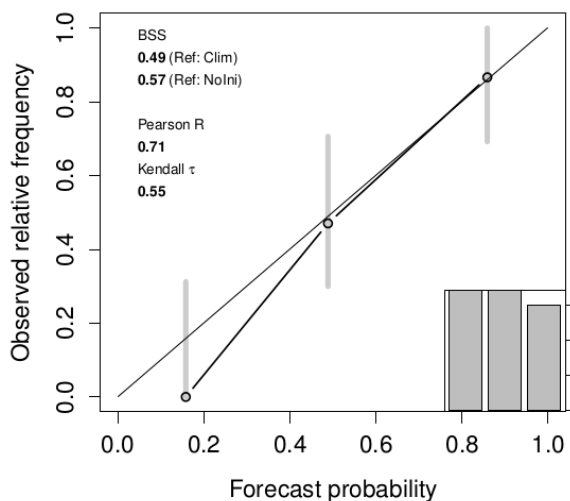
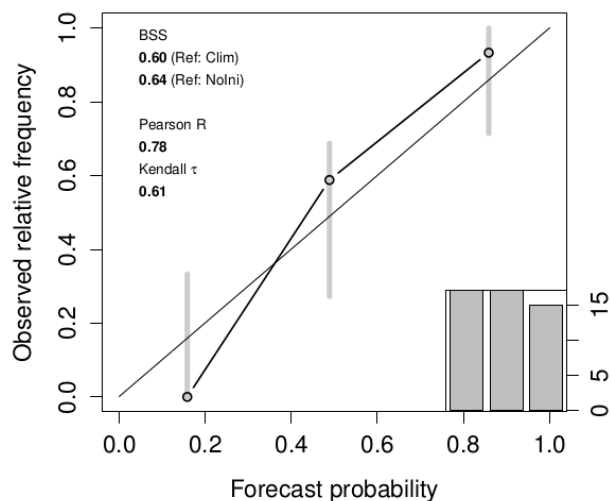
Eden et al. (GMD, 2015)

Some SPECS outcomes

- Almost 100 papers published or in press
- Tens of coordinated prediction experiments
- Tens of terabytes of data available from BADC
- Coordinated case studies (data provided people outside SPECS)

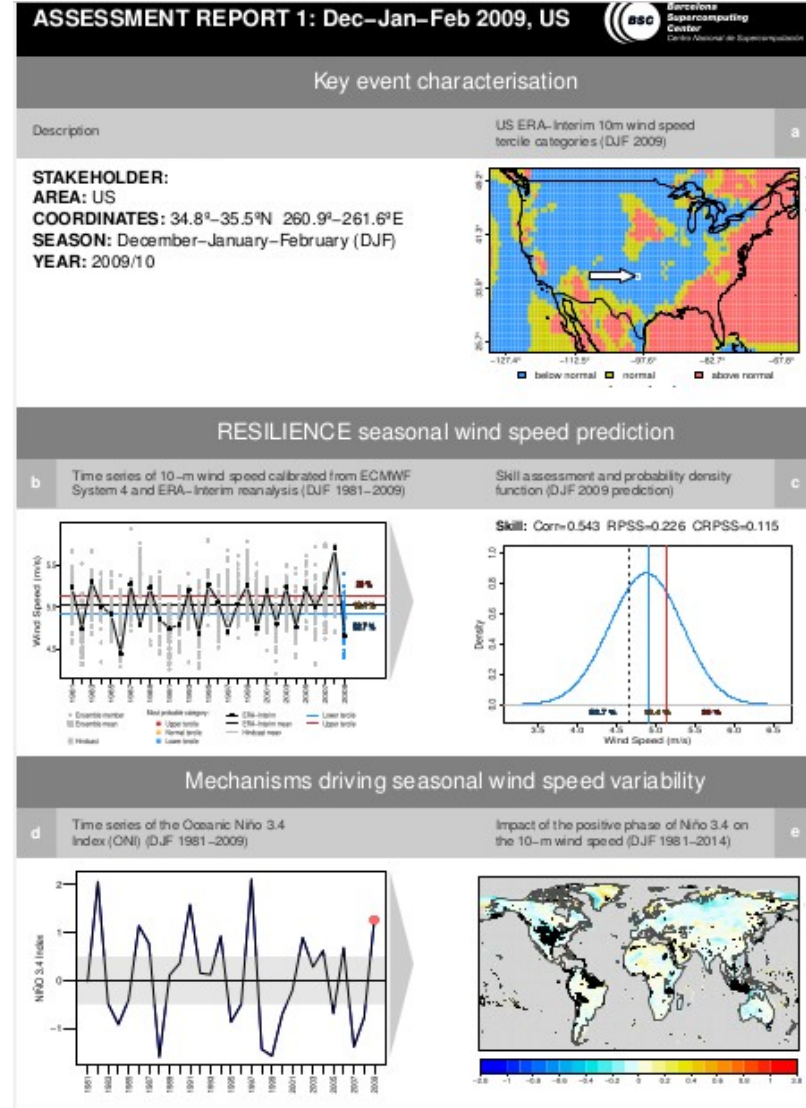
- A convention defined for climate predictions to be full part of other climate data dissemination infrastructure (including CMIP6)
- Climate prediction factsheets
- Contribution to portals, but
- Go beyond portals, focus on APIs (made public also for commercial purposes)
- Expert judgement cannot be made automatic in a forecast context

Reliability diagrams of initialised MME for left) basin-wide ACE and centre) U.S. ACE and right) uninitialised MME U.S. ACE 1-5 year forecasts for anomalies above the mean over 1961-2009. Statistically significant values are in bold.



Caron et al. (GRL, 2015)

Reports on wind-energy potential produced in collaboration with EUPORIAS where both science and user requests meet in a single document.



<https://giotto.casaccia.enea.it/specs-solar/>

ECMWF System 4 Seasonal Forecasts: Solar Radiation and Temperature

Choose a forecast variable:

Surface Solar Radiation (JJA) ▼

Choose an observation dataset:

Surface Radiation Budget (SRB) ▲

WATCH (WFDEI)

Surface Radiation Budget (SRB)

Show significant points:

No ▼

Years

1,984 2,007

1,984 1,987 1,990 1,993 1,996 1,999 2,002 2,005 2,007

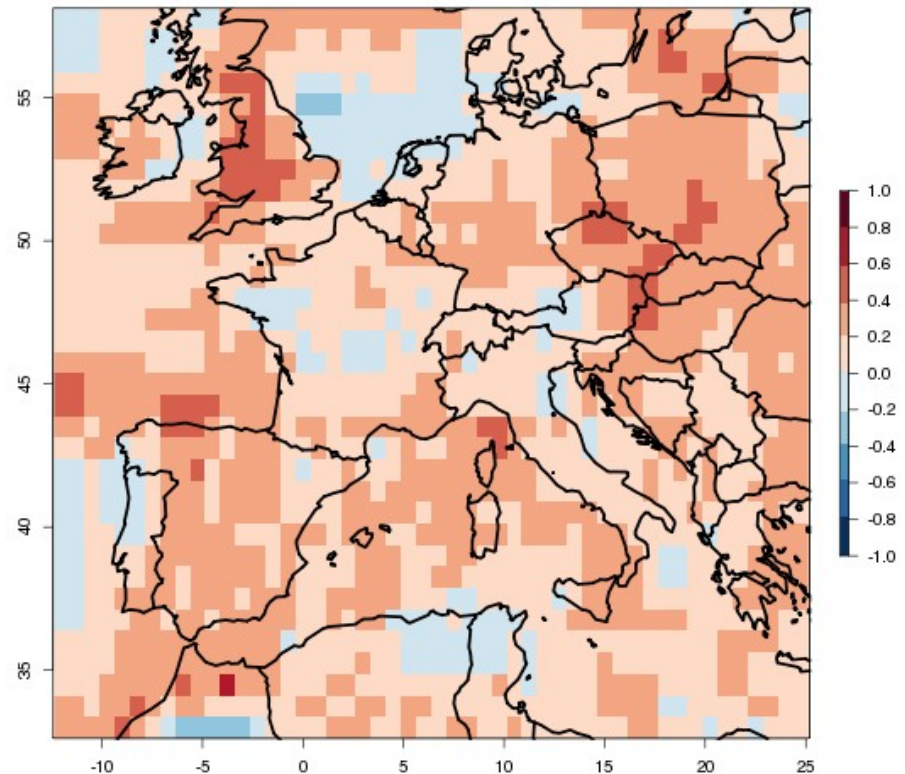
Lead Time (months)

1 3

☐ Remove trend from data

☐ Interpolation

SRB data has been downloaded from [here](#)



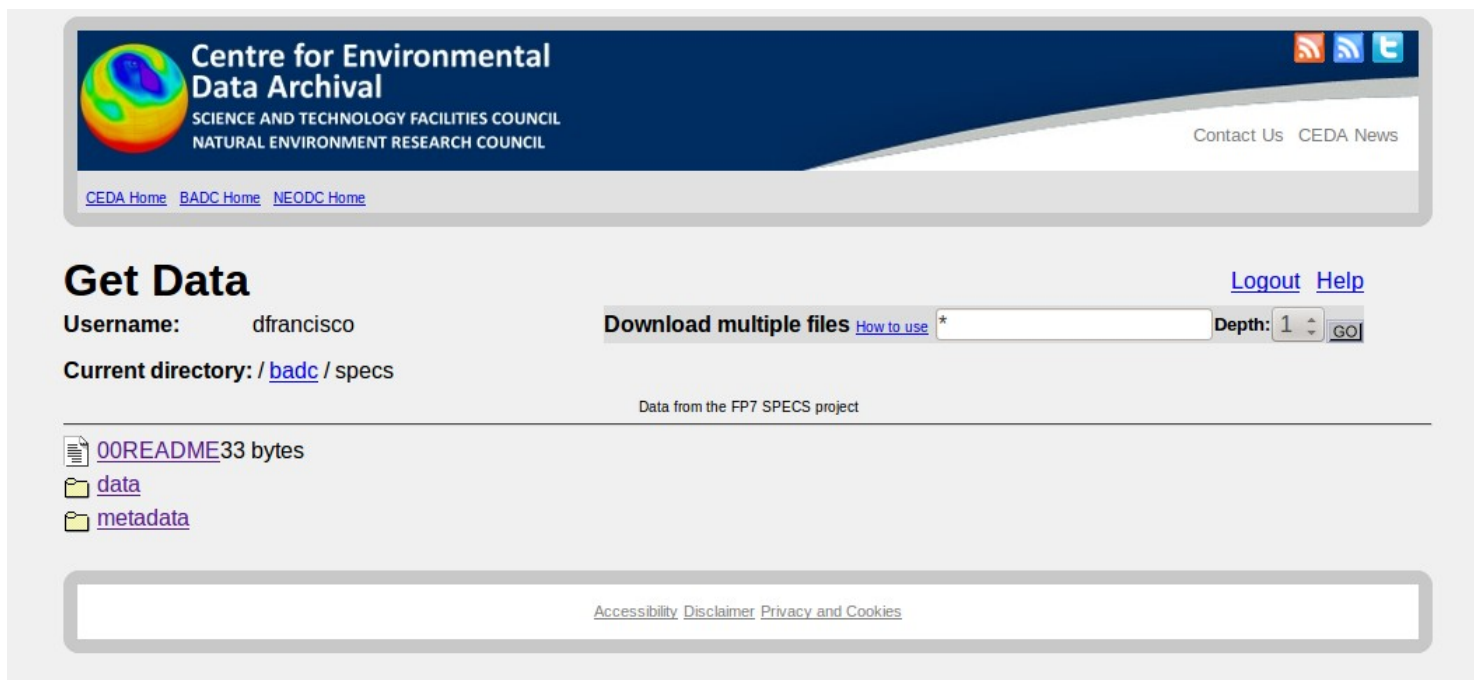
De Felice et al. (Appl. Energy, 2014)

Data dissemination

Centralised data repository at BADC with files using a convention building on both CMIP5 and CHFP and that is expected to become the basis for CMIP6.

Data published on the ESG after quality control reachable by other SPECS-related services (ECOMS UDG, Climate Explorer, etc).

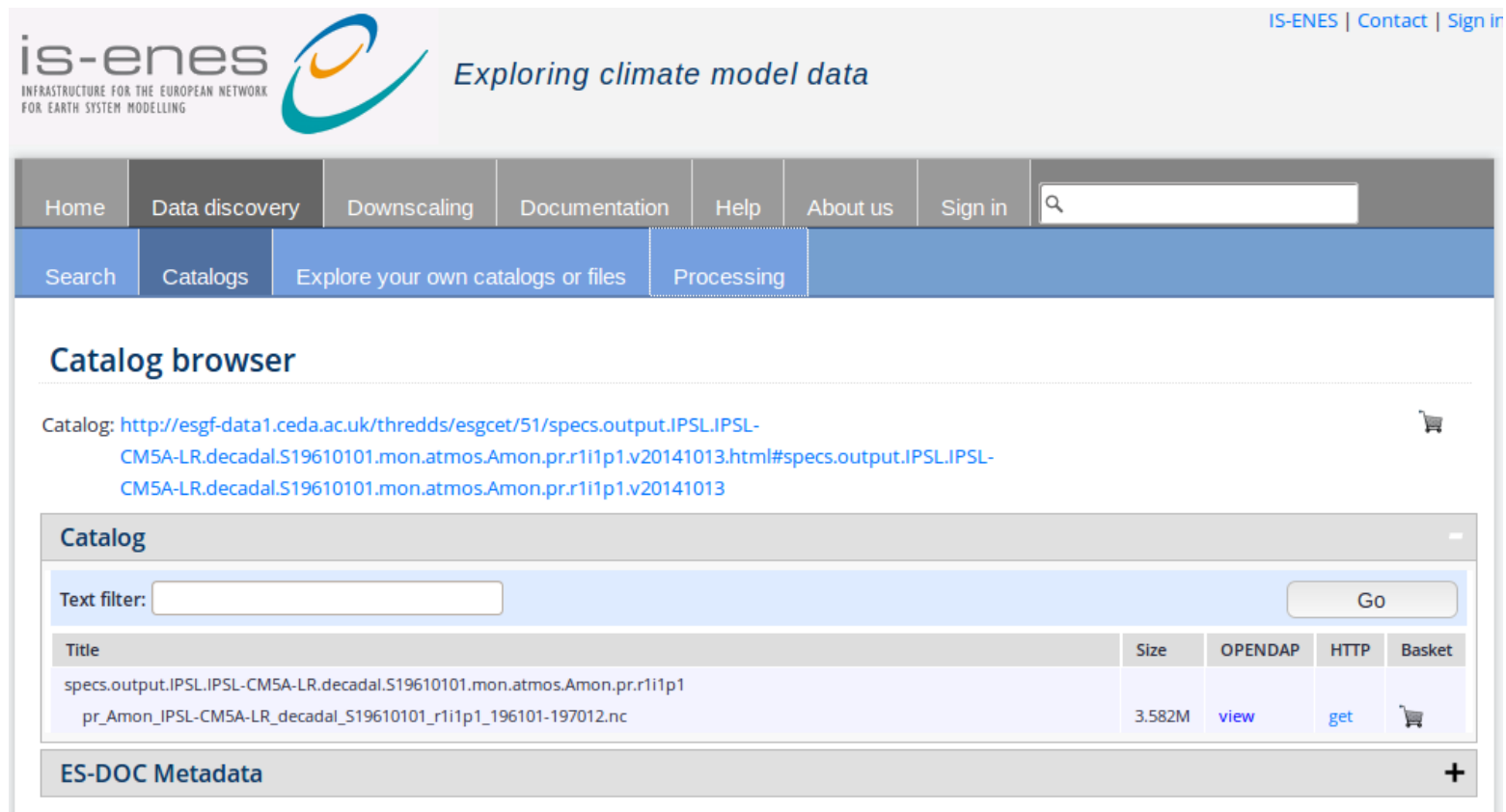
Multiple sensitivity experiments and NMME data available.



The screenshot shows the CEDA website interface. At the top, there is a header with the CEDA logo, the text "Centre for Environmental Data Archival", and the affiliations "SCIENCE AND TECHNOLOGY FACILITIES COUNCIL" and "NATURAL ENVIRONMENT RESEARCH COUNCIL". There are also social media icons for RSS, Facebook, and Twitter, and links for "Contact Us" and "CEDA News". Below the header, there are links for "CEDA Home", "BADC Home", and "NEODC Home". The main section is titled "Get Data" and includes a "Logout" and "Help" link. A "Username:" field contains "dfrancisco". A "Download multiple files" button is followed by a "How to use" link and an asterisk. A "Depth:" field shows "1" and a "GO" button. The "Current directory:" is "/ [badc](#) / specs". Below this, it says "Data from the FP7 SPECS project". There are three items listed: a document icon for "00README33 bytes", a folder icon for "[data](#)", and a folder icon for "[metadata](#)". At the bottom, there is a footer with links for "Accessibility", "Disclaimer", and "Privacy and Cookies".

The SPECS data are now visible from the Climate4impact portal
<http://climate4impact.eu>.

Lots of work still missing: e.g. use cases and processing demonstration video
 for climate predictions



is-enes *Exploring climate model data*
 INFRASTRUCTURE FOR THE EUROPEAN NETWORK FOR EARTH SYSTEM MODELLING


IS-ENES | Contact | Sign in


Home Data discovery Downscaling Documentation Help About us Sign in

Search Catalogs Explore your own catalogs or files Processing

Catalog browser

Catalog: <http://esgf-data1.ceda.ac.uk/thredds/esgcat/51/specs.output.IPSL.IPSL-CM5A-LR.decadal.S19610101.mon.atmos.Amon.pr.r1i1p1.v20141013.html#specs.output.IPSL.IPSL-CM5A-LR.decadal.S19610101.mon.atmos.Amon.pr.r1i1p1.v20141013>

Catalog				
Text filter: <input type="text"/>				
Go				
Title	Size	OPENDAP	HTTP	Basket
specs.output.IPSL.IPSL-CM5A-LR.decadal.S19610101.mon.atmos.Amon.pr.r1i1p1 pr_Amon_IPSL-CM5A-LR_decadal_S19610101_r1i1p1_196101-197012.nc	3.582M	view	get	

ES-DOC Metadata 

GA 2014 verification demo

Aims and Agenda for the 2nd SPECS Verification Workshop [credit]

The aims of this short workshop are to:

- demonstrate new software that has been developed for verification
- allow participants try this out on their own laptops
- have a brief discussion about future needs and plans

The planned agenda for the workshop is as follows

Time Activity

11:00-11:20 Demo of UNEX-SPECSVerification software

11:20-11:40 Demo of S2dverification software

11:40-12:00 Demo of Meteo-Swiss verification software

12:00-12:45 Hands on session for participants to try out software

12:45-13:00 Brief discussion about future needs and plans

All these packages run in the freely available R language. See the R project site www.r-project.org to download R. Please also consider loading in your favourite forecast and observation data beforehand so that you can try out the verification on your own data.

More information about the new software is given below ...

- [SpecsVerification Demo talk-Media:Specsverification.pdf](#)
- [S2dverification Demo talk-Media:s2dverification.pdf](#)
- [Meteo-Swiss verification Demo talk-Media:veri.pdf](#)

A series of fact sheets has been created (available from the SPECS web site). Common vocabulary with EUPORIAS, targeting a wide audience, mimicking some material already existing to explain what climate change is.

SPECS Fact sheet #2

What is a decadal prediction?

October 2014

Weather is chaotic which limits its predictability to one or two weeks. This means that it will never be possible to extend normal weather forecasts to seasonal time-scales and beyond.

For example, we will never be able to predict the weather on a specific date in a specific place years in advance. However, **changes in prevailing weather over the course of several months to years are potentially predictable**. For instance we may be able to say if a particular region might expect, on average, colder winters or drier summers. Such changes in weather patterns occur due to the interaction of the atmosphere with more slowly varying parts of the Earth system.



Weather is a result of energy moving through the Earth system. Energy is originally radiated to the Earth from the Sun, with most being re-emitted or reflected back to space. The amount that remains in the Earth system is modulated by many things: some emerge naturally within the system (*internal variability*), whilst others are controlled by external factors such as variations in solar output, greenhouse gases, and atmospheric particles.