



**Barcelona
Supercomputing
Center**

Centro Nacional de Supercomputación



EXCELENCIA
SEVERO
OCHOA

Earth System Services communication: bringing science to society

Marta Terrado, Dragana Bojovic, Albert Soret, Francisco Doblas-Reyes

Earth System Services Group, Earth Sciences Department

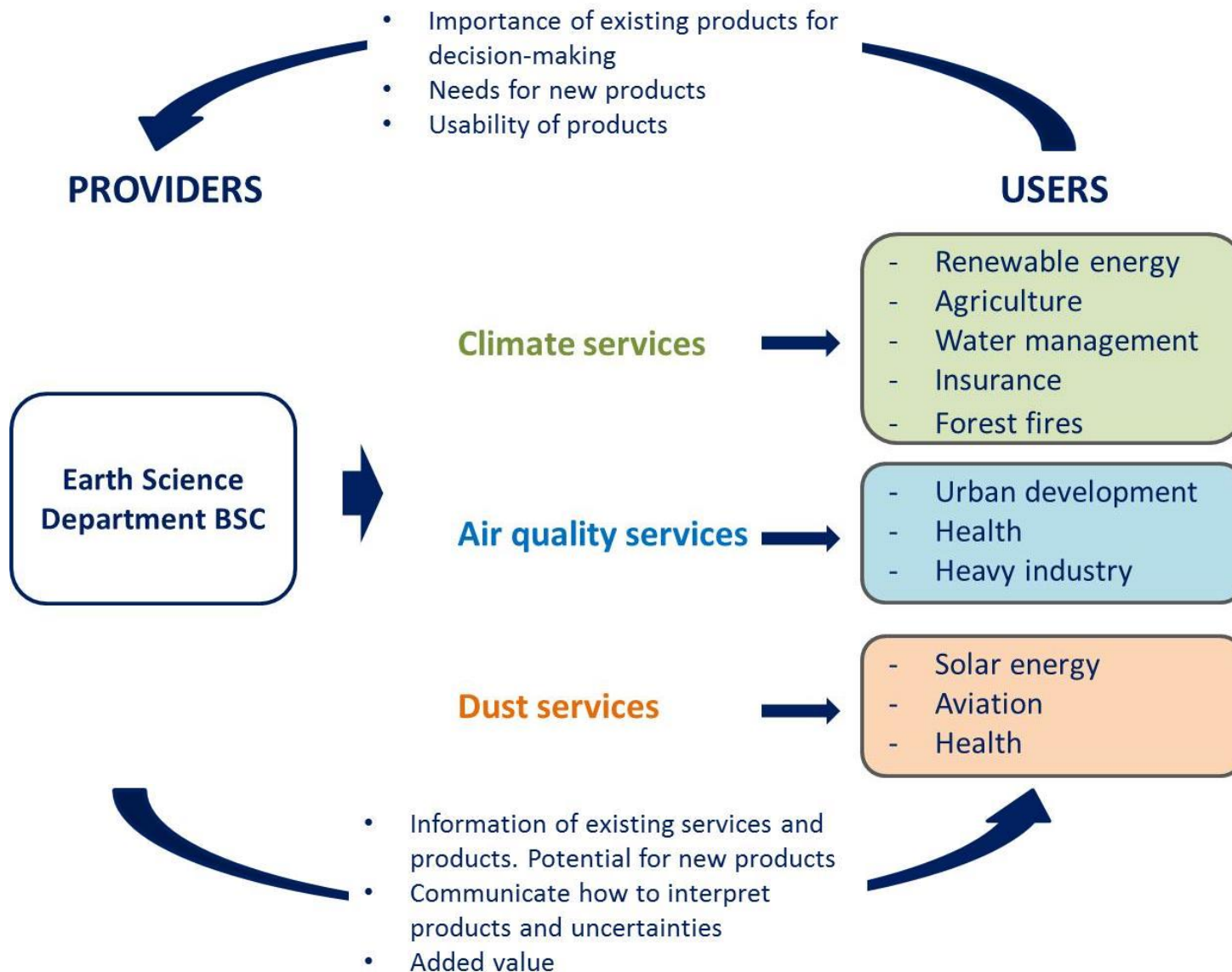


EMS Annual Meeting 2017, Dublin

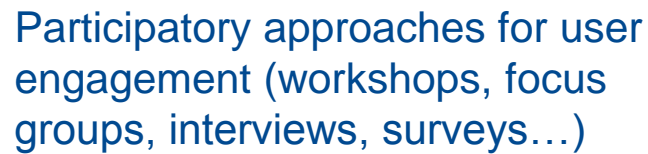
Demonstrate the ongoing value of climate services and air quality services to the citizens and the economy through:

- The application of HPC to **transfer knowledge and technology** to support adaptation to a rapidly changing environment
- **Provision of services** based on **user-defined sectoral needs** that help anticipate the adverse effects of climate change and air quality deterioration





**Barcelona
Supercomputing
Center**
Centro Nacional de Supercomputación



From providers to users



Barcelona
Supercomputing
Center
Centro Nacional de Supercomputación

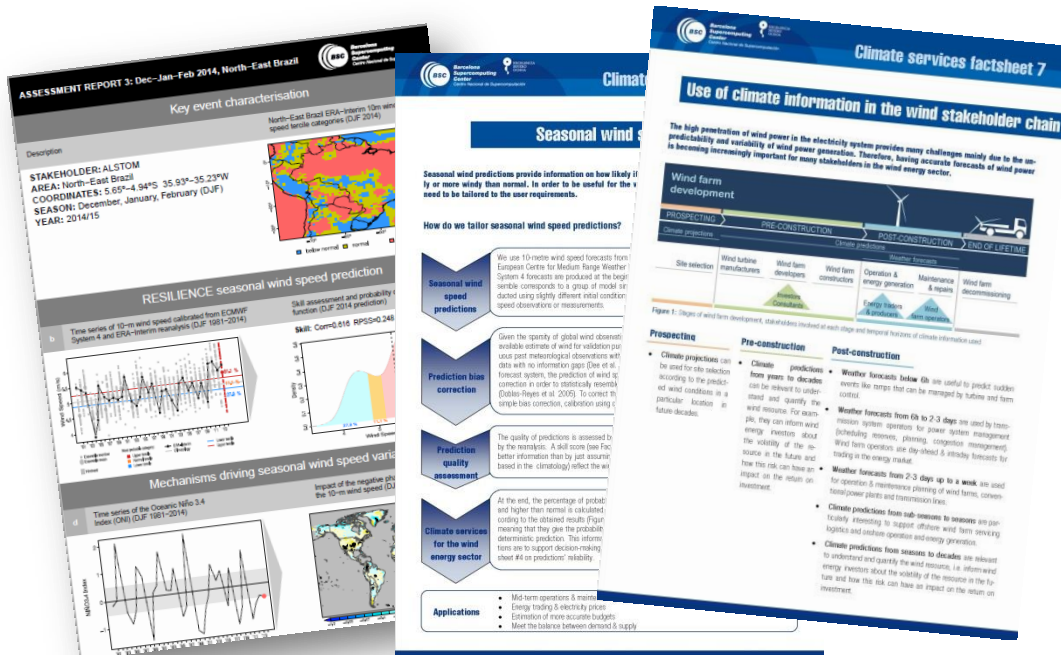
EXCELENCIA
SEVERO
OCHOA

Understandable information (factsheets, newsletters, key events, etc.)

The Weather Roulette application - Innovative tools for reaching the users

Download app:

<https://play.google.com/store/apps/details?id=es.predictia.weatherroulette&hl=es>



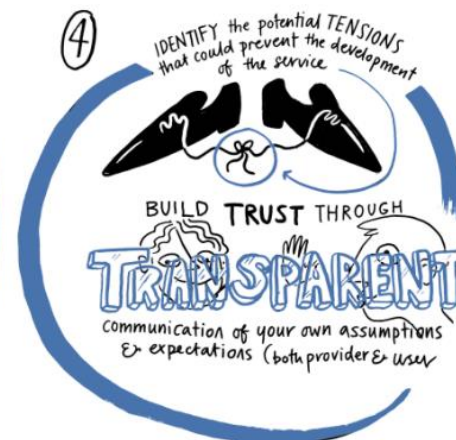
PROVIDERS

USERS

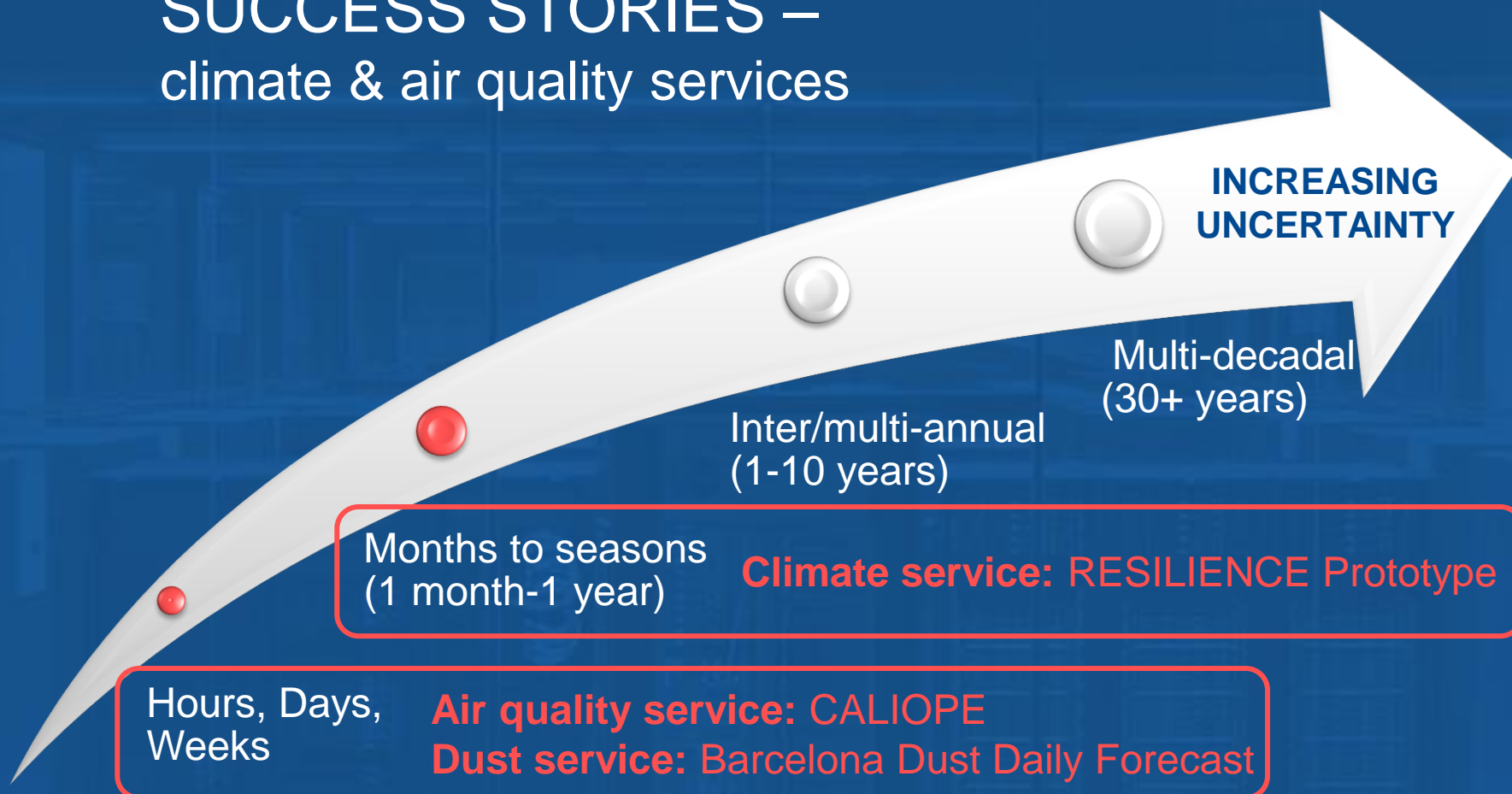
- Information of existing services and products. Potential for new products
- Communicate how to interpret products and uncertainties
- Added value



Principles



SUCCESS STORIES – climate & air quality services



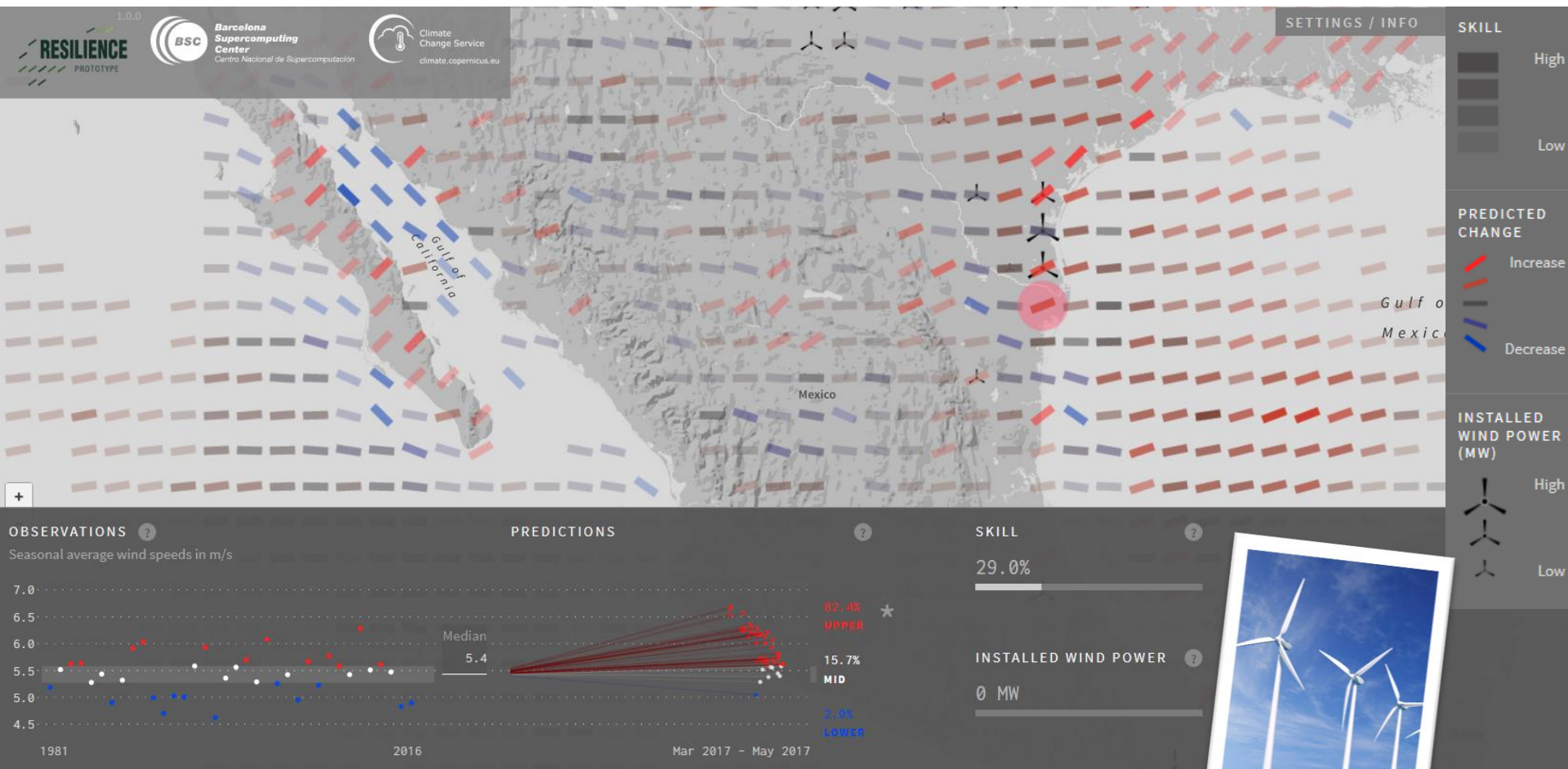


RESILIENCE Prototype:

On-line visualisation tool for the wind energy sector

- Robust information on the future variability of wind worldwide (seasonal wind speed predictions)
- Joint development between scientists, a visualisation team and users from the renewable energy sector
- Effort in communicating probabilistic predictions to decision-makers

Climate service for wind energy – The RESILIENCE prototype

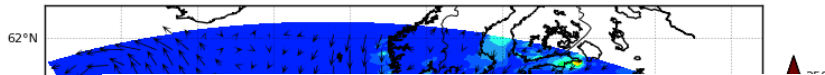


Applications

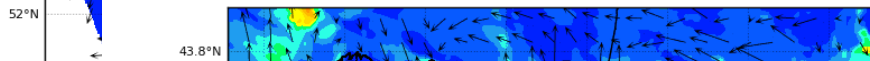
- Energy generation and trading
- Energy distribution
- Operations and maintenance planning

CALIOPE air quality forecast system

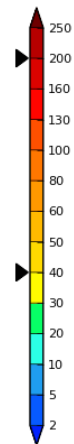
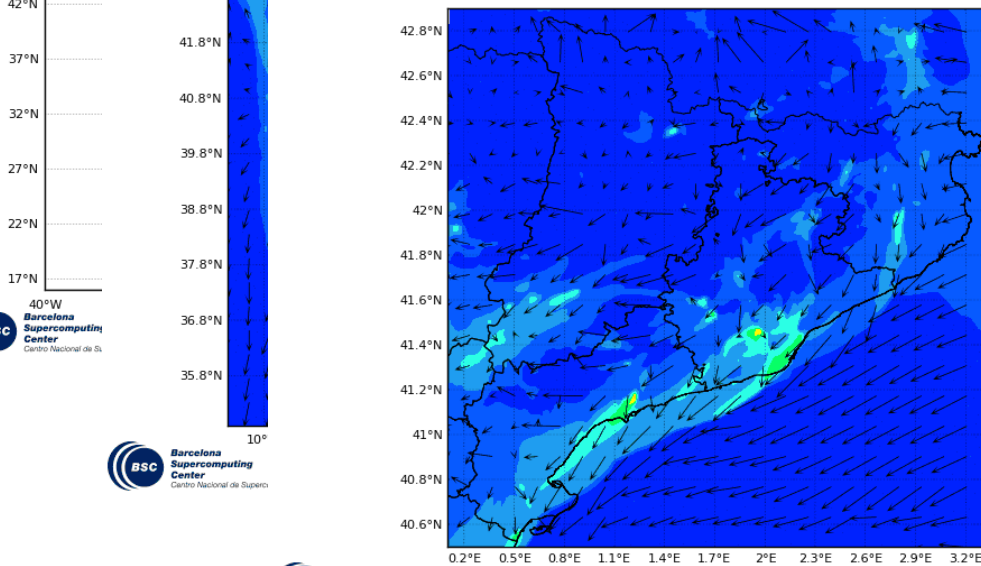
BSC-ES/AQF WRFv3.5.1+CMAQv5.0.2+HERMESv2 Nitrogen Dioxide ($\mu\text{g}/\text{m}^3$)
00h forecast for 00UTC 31 May 2016 - Europe Res: 12x12km



BSC-ES/AQF WRFv3.5.1+CMAQv5.0.2+HERMESv2 Nitrogen Dioxide ($\mu\text{g}/\text{m}^3$)
00h forecast for 00UTC 01 Nov 2015 - Iberian Peninsula Res: 4x4km



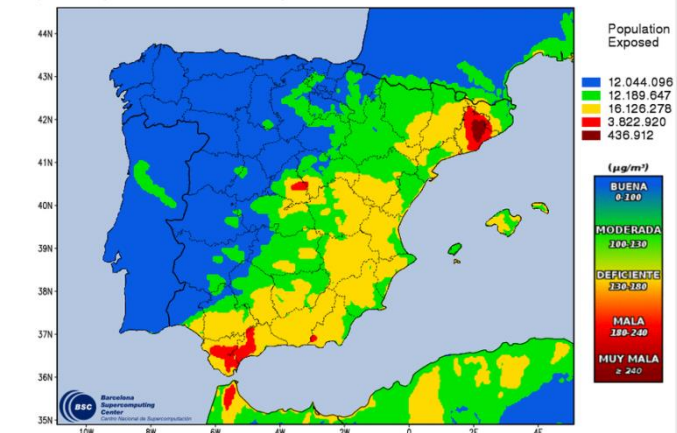
BSC-ES/AQF WRFv3.5.1+CMAQv5.0.2+HERMESv2 Nitrogen Dioxide ($\mu\text{g}/\text{m}^3$)
00h forecast for 00UTC 01 Nov 2015 - Catalonia Domain Res: 1x1km



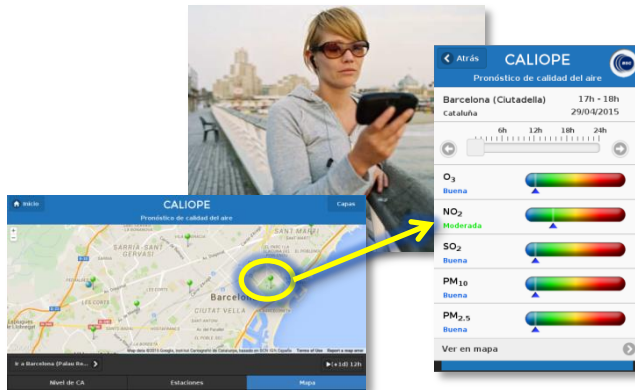
- Web & smartphone app for air quality forecasts
- Operational air quality forecasts for the next 24/48h for major regulated pollutants in Europe (NO_2 , SO_2 , O_3 , CO , PM_{10} , $\text{PM}_{2.5}$)

Air quality index and population exposed

BSC-ES/Air Quality Forecast WRFv3.5.1+CMAQv5.0.2 O3 MAX 1-hr
Population Exposed for 04 AUG 17 over Spanish Iberian Peninsula + Balearic I, Res:4x4km



Applications



Health:

Anyone interested in the state of air quality (people with cardio-respiratory diseases, small children, runners...)



Urban planning:

Effect of management strategies to reduce atmospheric pollution and effects on citizens and the environment



Heavy industry:

Integrated assessment and control of point pollution sources (power, incineration or biomass plants, cement industries, etc.)

BSC dust daily forecast

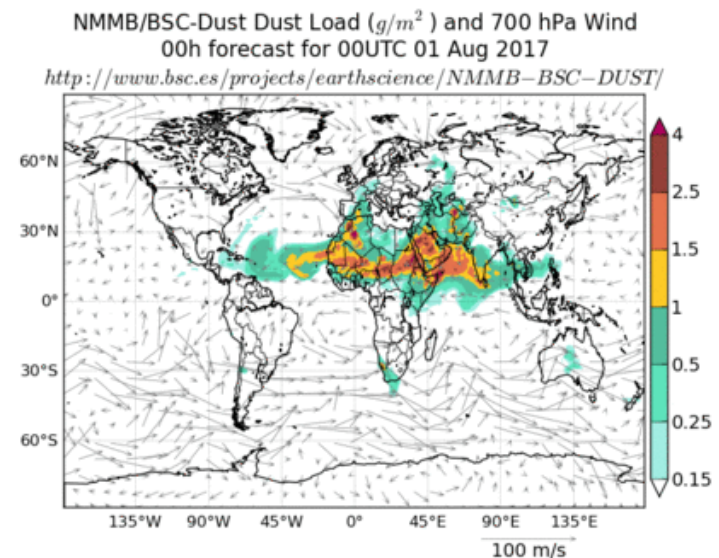
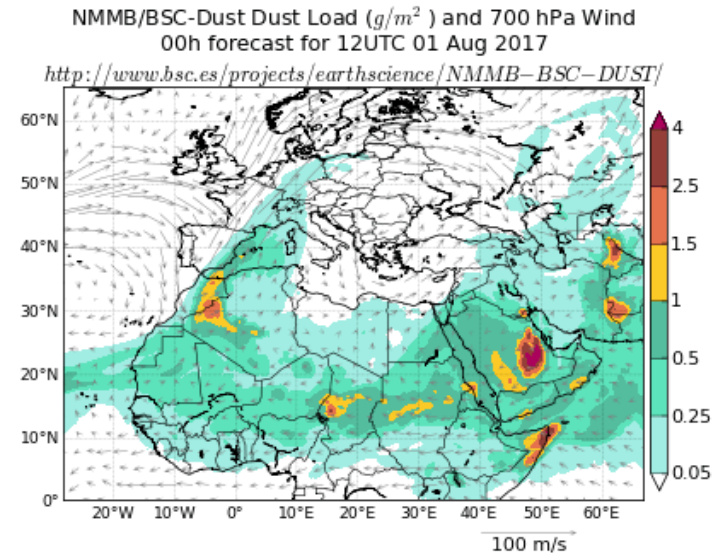
- Operational dust daily forecast at 72 hours (daily updated)

www.bsc.es/ess/bsc-dust-daily-forecast

- Various variables (dust optical depth, dust surface concentration, dust dry and wet deposition...)

WMO Dust Centers

- ✓ **Sand and Dust Storm Warning Advisory and Assessment System Regional Center for North Africa, Middle East and Europe (SDS-WAS RC)** <http://sds-was.aemet.es>
- ✓ **Barcelona Dust Forecast Center (BSFC):** First specialized WMO Center for mineral dust prediction <http://dust.aemet.es>



Applications



Health:
Early-warning system for
people with respiratory
disorders



Solar energy:
Power forecasting, mid-term
maintenance planning



Agriculture:
Crop damage



Transportation:
Visibility assessments for
airlines and flight
managements (air)
Transportation impacts
(ground)

- **Step 1:** Identify **user needs** through participatory approaches involving interdisciplinary groups that will guide research
- **Step 2: Co-development** of services ensuring that the research is user-driven
- **Step 3:** Include various iterations with users to incorporate **user's feedback** and ensure that the final services are understandable, useful and usable. This allows making services operational and therefore **sustainable in the long range**





Thank you!

For further information please contact
marta.terrado@bsc.es

RESILIENCE



CLIM4ENERGY



Projecte RePort



**Generalitat
de Catalunya**



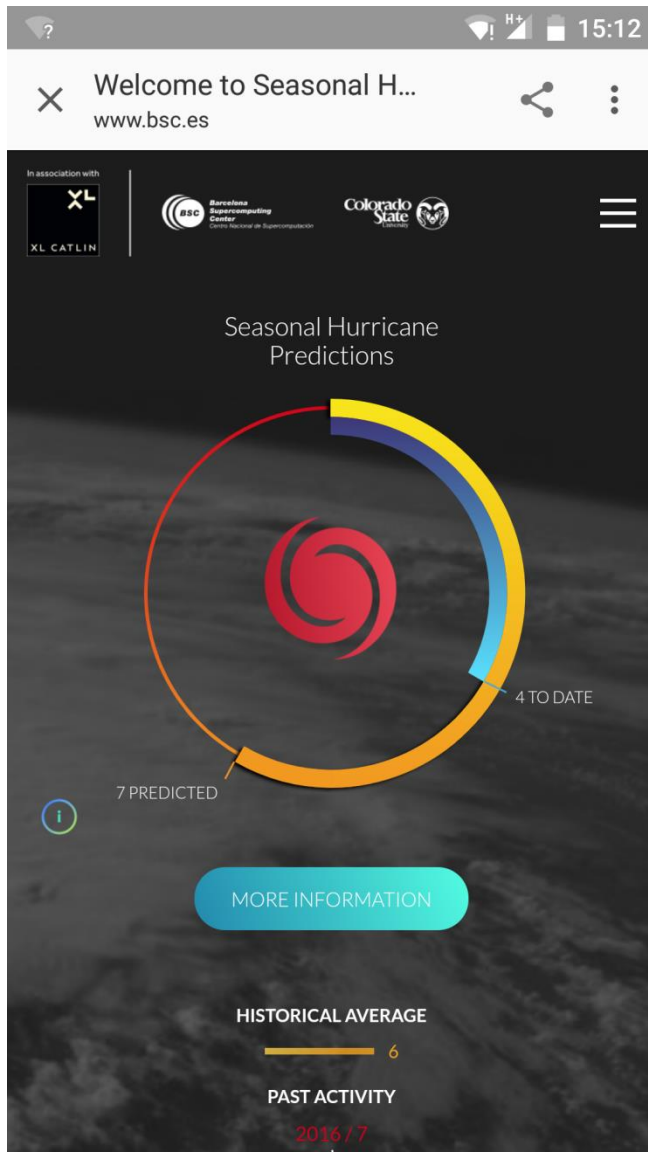
WMO SDS-WAS



**WORLD
METEOROLOGICAL
ORGANIZATION**

The research leading to these results has received funding from the Ministerio de Economía y Competitividad (MINECO) under project CGL2013-41055-R, the Catalan Government and the European Commission under a RIS3CAT project and a contract for the Copernicus Climate Change Service implemented by ECMWF on behalf of the European Commission

3- Climate service for insurance

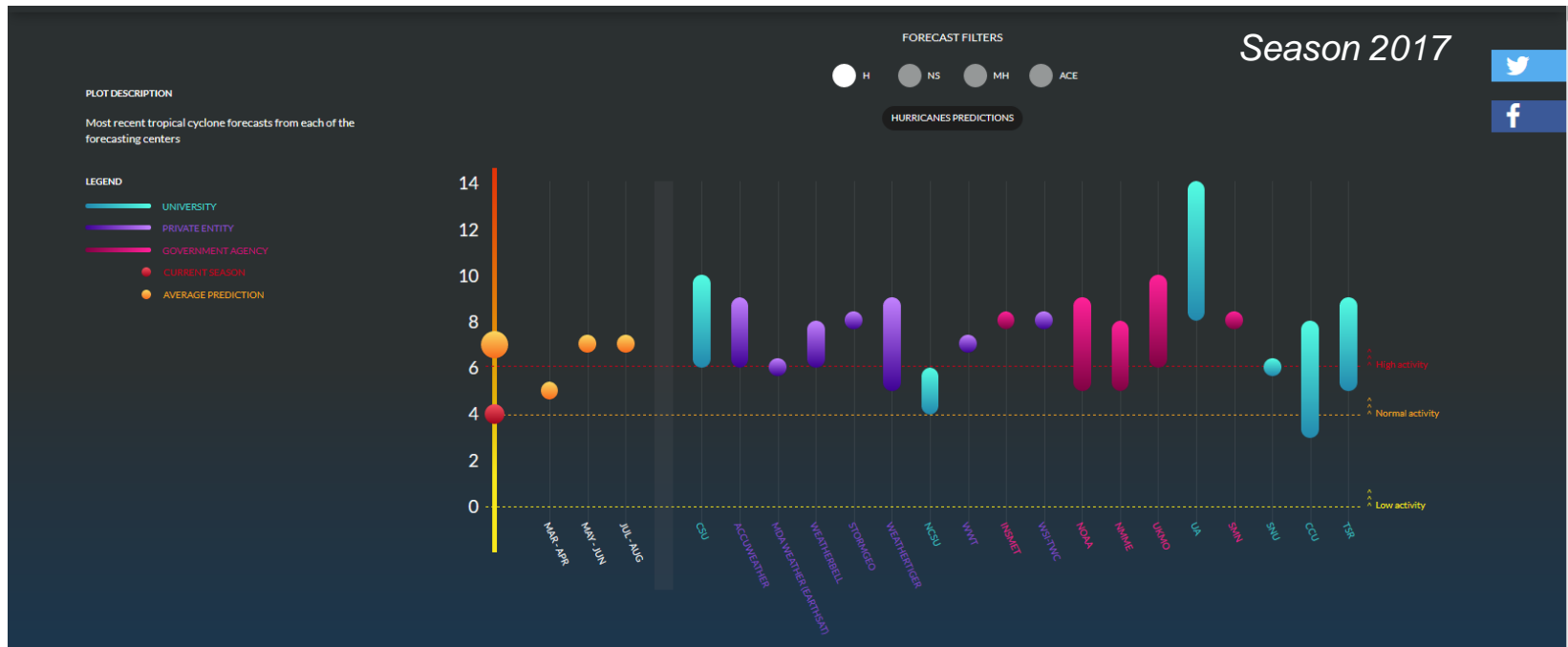


On-line visualisation platform of the seasonal hurricane activity for the re/insurance sector

- **Brings together** predictions from different centers that specialize in Atlantic hurricane forecasting
- Developed by a team of scientists, graphic designers and visualisation specialists **together with the user**
- Specific section for the scientific community & **informative section** for the general public

www.seasonalhurricanepredictions.org

3- Climate service for insurance



Medium-range climate predictions are **useful for the adaptation of the re/insurance sector to climate change**. Applications:

- Catastrophe evaluation
- Loss estimation / Price determination
- Preparation of the claim team and client warning