



ENGAGEMENT, INVOLVEMENT & EMPOWERMENT: Triple Approach to Effective Climate Service

Bojović, D., Christel, I. Gonzalez, P., Stanzel, P., Palin, E. et al.

*With thanks to all of our colleagues in the
PRIMAVERA user engagement and climate risk assessment teams*

This project has received funding from the European Union's
Horizon 2020 Research & Innovation Programme
under grant agreement no. 641727.



INTERDISCIPLINARITY AND TRANSDISCIPLINARITY IN CLIMATE SERVICES

And in practice?

"An integrating synthesis is not achieved through the accumulation of different brains." Max-Neef, 2004

Transdisciplinary researches strive to understand the complexity of the whole problem, rather than only those parts that pertain to their main research discipline.

Climate services could take better advantage of best social sciences available on the human dimensions of global change research field.

Coproduction in climate services

WMO's Guidance on Good Practices for Climate Services User Engagement (2018)

Multiple Interfaces for User Engagement and Informing Decisions

ACTIVE ENGAGEMENT

- Bespoke services
- More intense interaction
- Highly iterative
- Directly usable data
- One-to-one contact
- In-depth understanding



Focused Relationships

Tailored & Targeted

- Multi-way communications
- Build trust
- Co-learning
- Co-producing
- Capacity-building
- Regular interaction



Interactive Group Activities

Dialogue Based

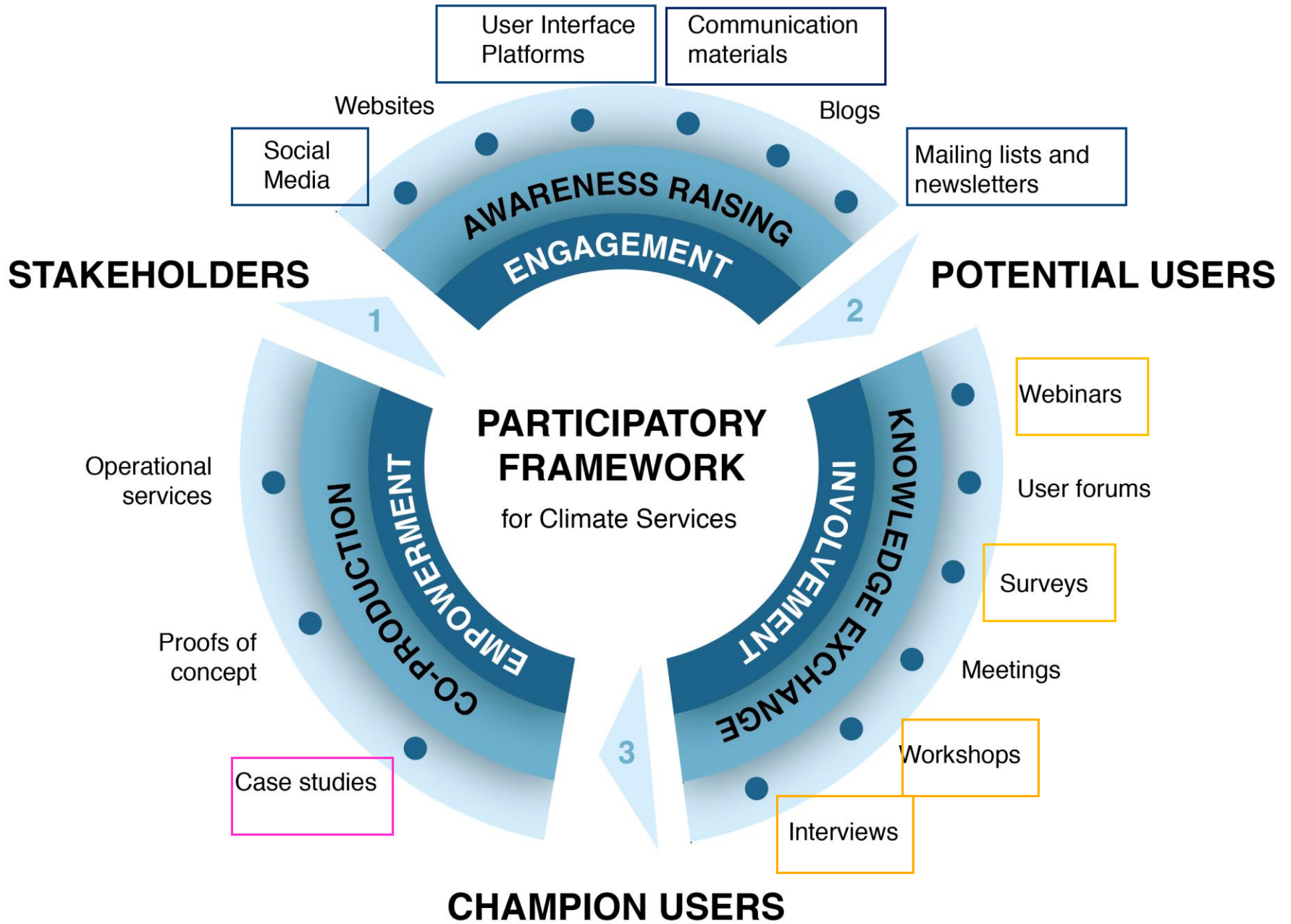
- One-stop shop window
- Up-to-date
- Wide range of products
- Easy to use
- User guided design
- Intuitive



Websites & Web Tools

Information Provision

PASSIVE ENGAGEMENT



CONCLUSIONS

- Relationships building *process*
- The evolving role of *user*
- Ethics – in coproduction the knowledge is produced in the way that it is **responsibility** and **ownership** of both sides

- **Interdisciplinarity** would mean more balanced and better integrated intellectual partnerships of different disciplines
 - +
considering the knowledge of stakeholders and their needs and interests at stake and defining common values and goals
 - =
Transdisciplinairty

- **Limitations:**
 - Coproduction is an intensive and time consuming process
 - Champion users are not “randomly” selected

THANK YOU!
QUESTIONS?

dragana.bojovic@bsc.es



[@PRIMAVERA_H2020](https://twitter.com/PRIMAVERA_H2020)