



**Barcelona  
Supercomputing  
Center**

*Centro Nacional de Supercomputación*



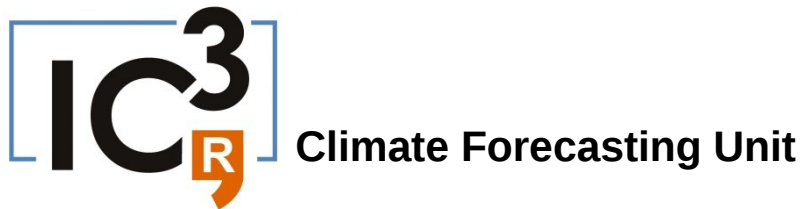
# EARTH SCIENCE SERVICES

## Seasonal and Sub-seasonal climate predictions

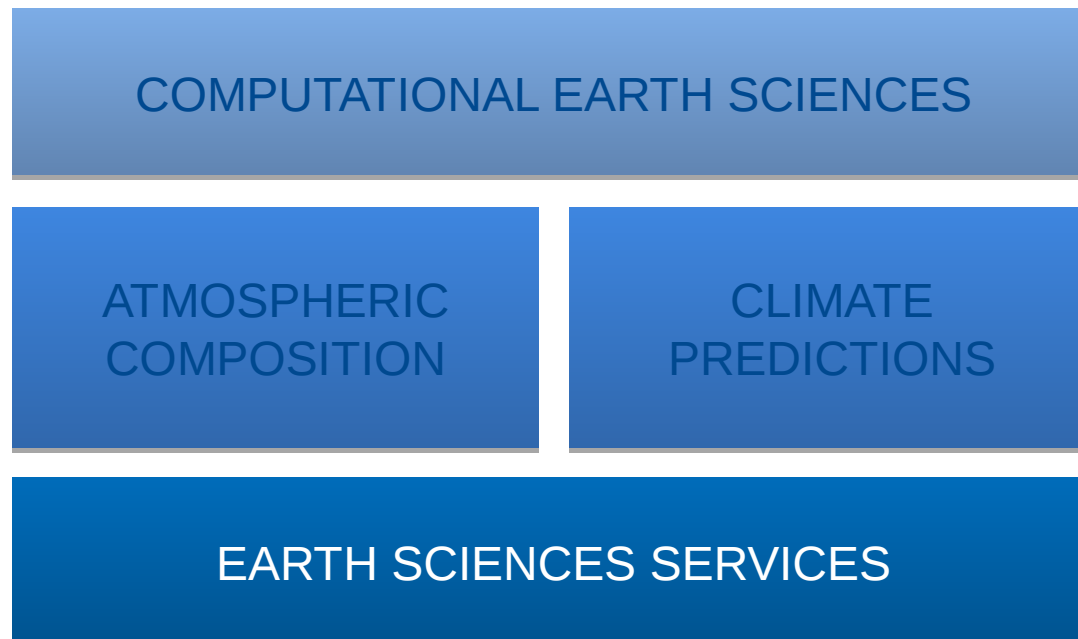
Isadora Christel Jiménez  
*Services - Earth Science Department*



- Merging process between



- New structure: 4 groups (~ 50 people)



## OUR OBJECTIVE:

Facilitate technology transfer of state-of-the-art research from local, national to international levels in five areas:

Air quality assessments

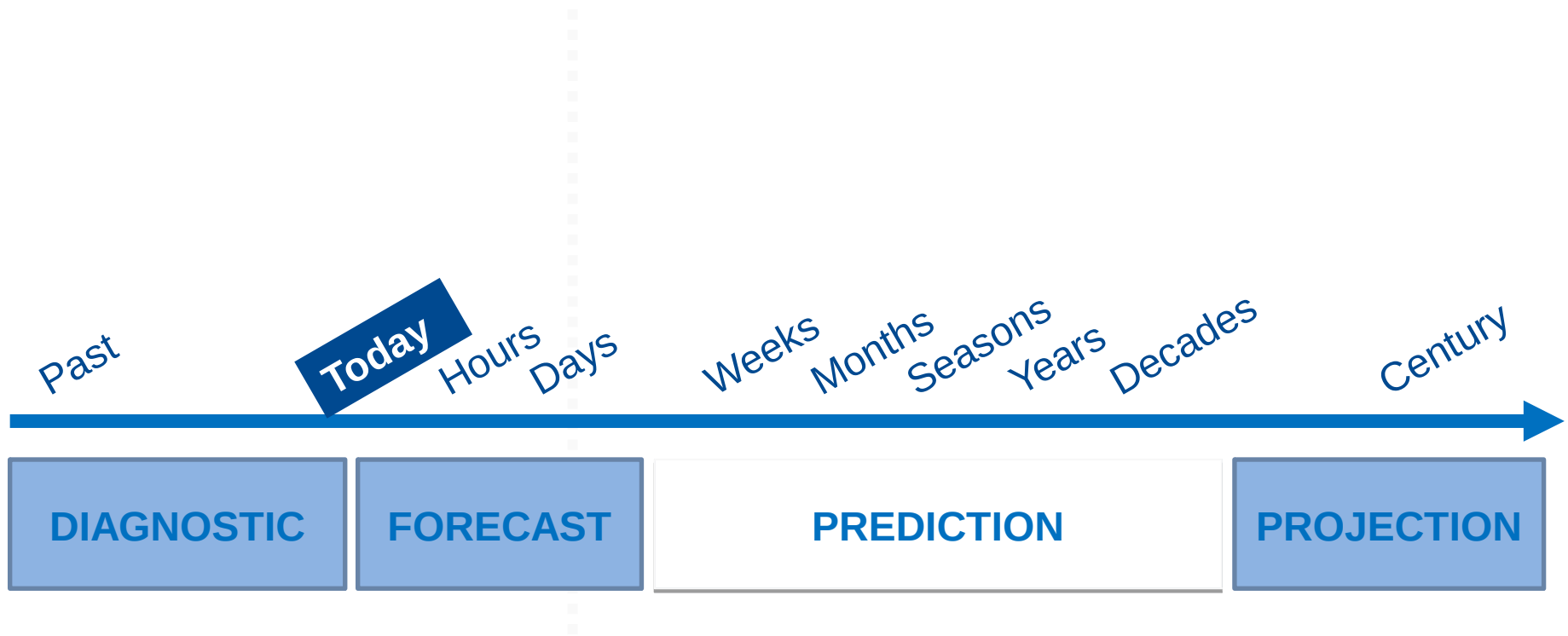
Mineral Dust modelling

Weather forecasting

Climate predictions

Computational Earth Services

# Temporal scales





**SPECS:** Seasonal-to-decadal climate Prediction for the improvement of European Climate Services

<http://www.specs-fp7.eu/>

EUPORIAS



**EUPORIAS:** EUropean Provision Of Regional Impact Assessment on a Seasonal-to-decadal timescale

<http://www.euporias.eu/>

NEW EUROPEAN WIND ATLAS  
**newa**



**NEWA:** New European Wind Atlas

<http://euwindatlas.eu/>



**PRIMAVERA, IMPREX, ...**

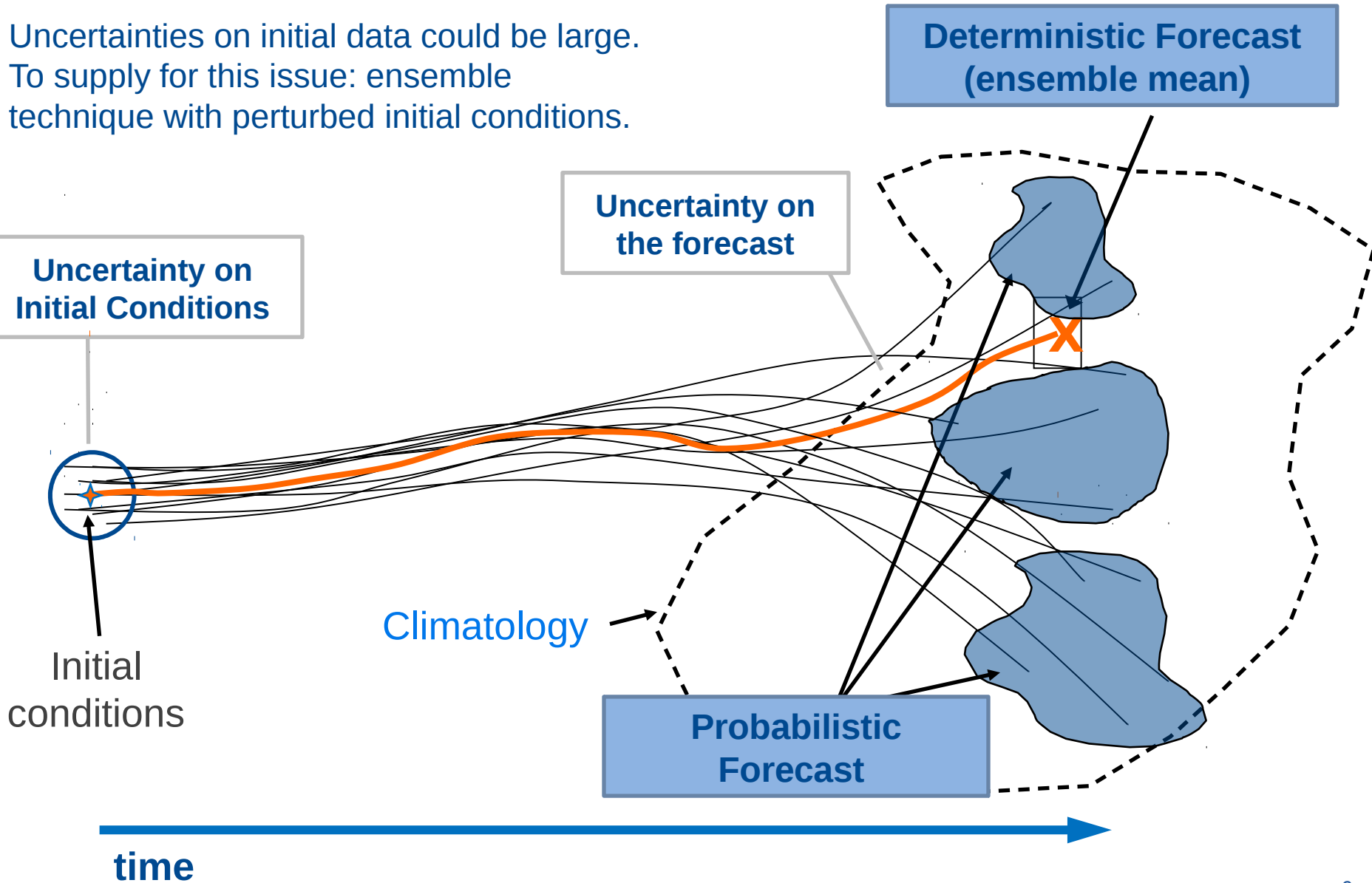
- Wind farms viability plans are in a decadal timeframe (10-15 years)
- Need for sub-seasonal, seasonal and decadal climate predictions, new field in climate predictions
- Worldwide only BSC-ES + Met Office work in this timeframe
- Partners in European projects (FP7 and H2020) in collaboration with private wind sector (EDPF, Vortex, EDPR...)



# Climate predictions and predictability

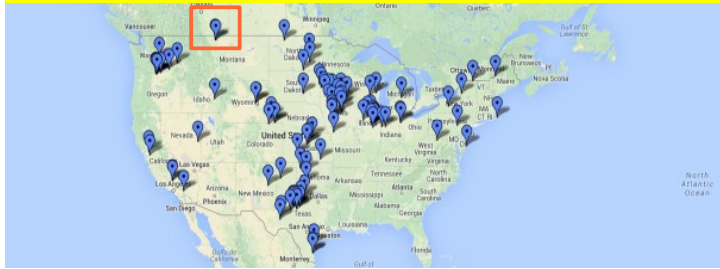


Uncertainties on initial data could be large.  
To supply for this issue: ensemble  
technique with perturbed initial conditions.



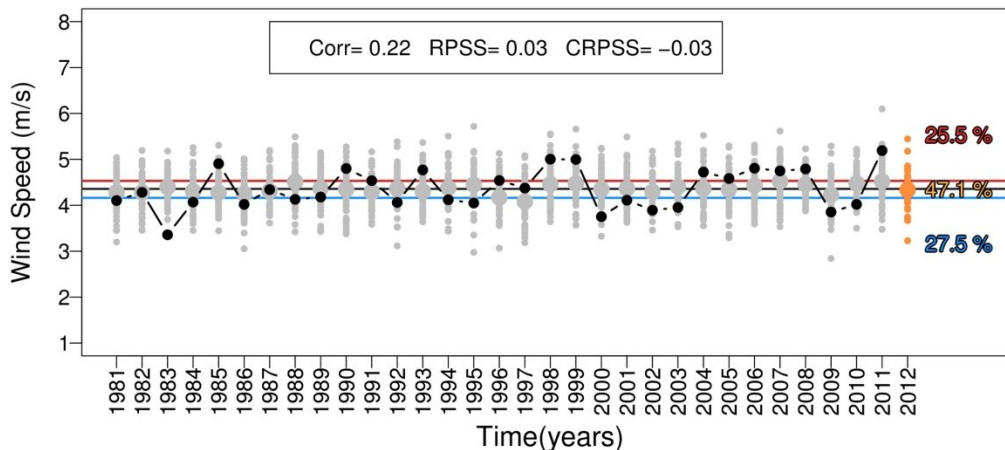
# Example: wind power predictions

Climate model: **ECMWF S4**  
10m wind speed “observations”: ERA-Interim  
**Winter season** forecast: 1 month lead time



- Data from **ECMWF** (European Centre for Medium-Range Weather Forecasts)
- We don't provide deterministic predictions. We assess the global behaviour providing a **probabilistic predictions**
- Aggregated output in **terciles**:
  - Above normal
  - Normal
  - Below normal

## Simple bias correction

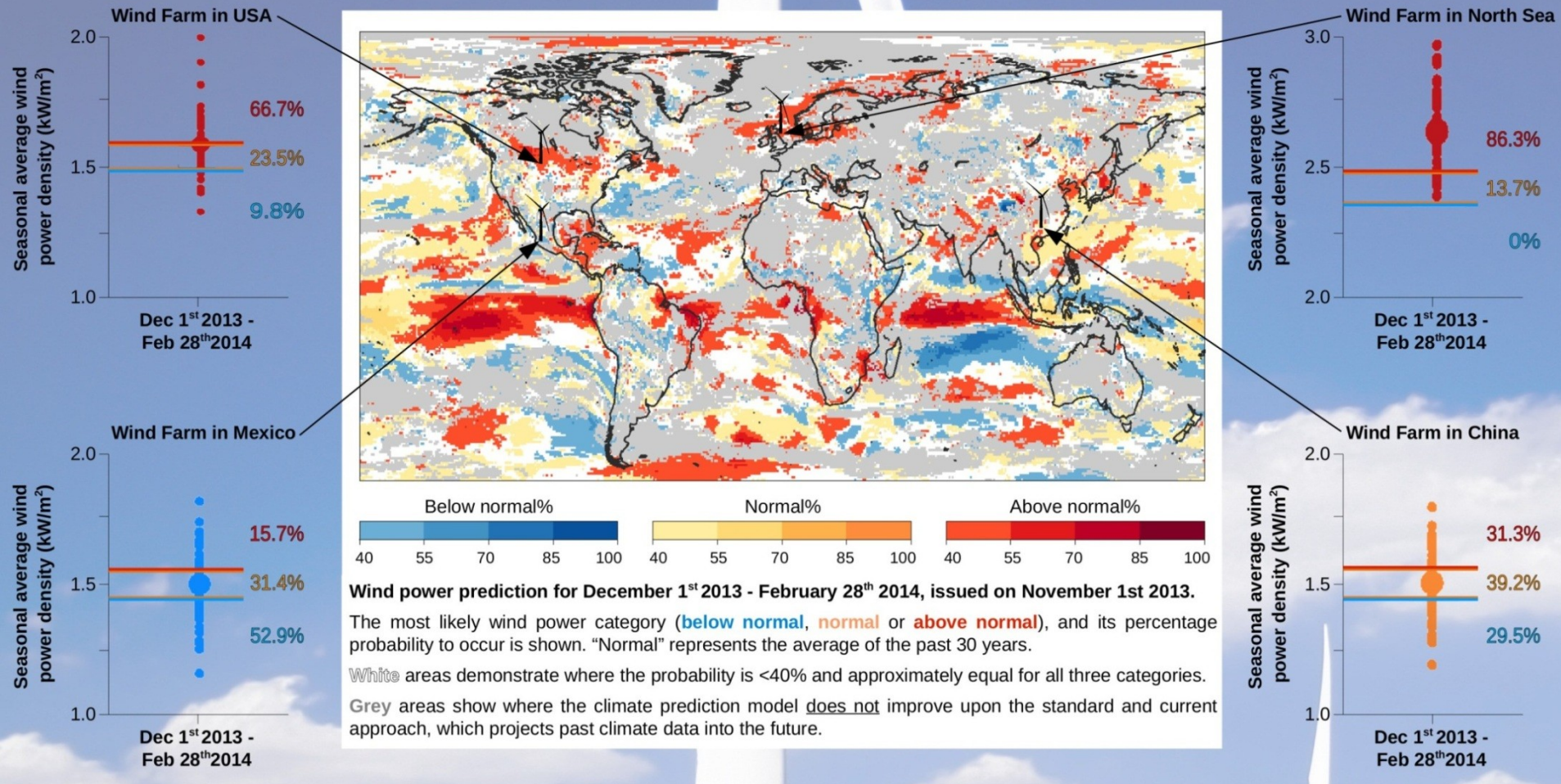




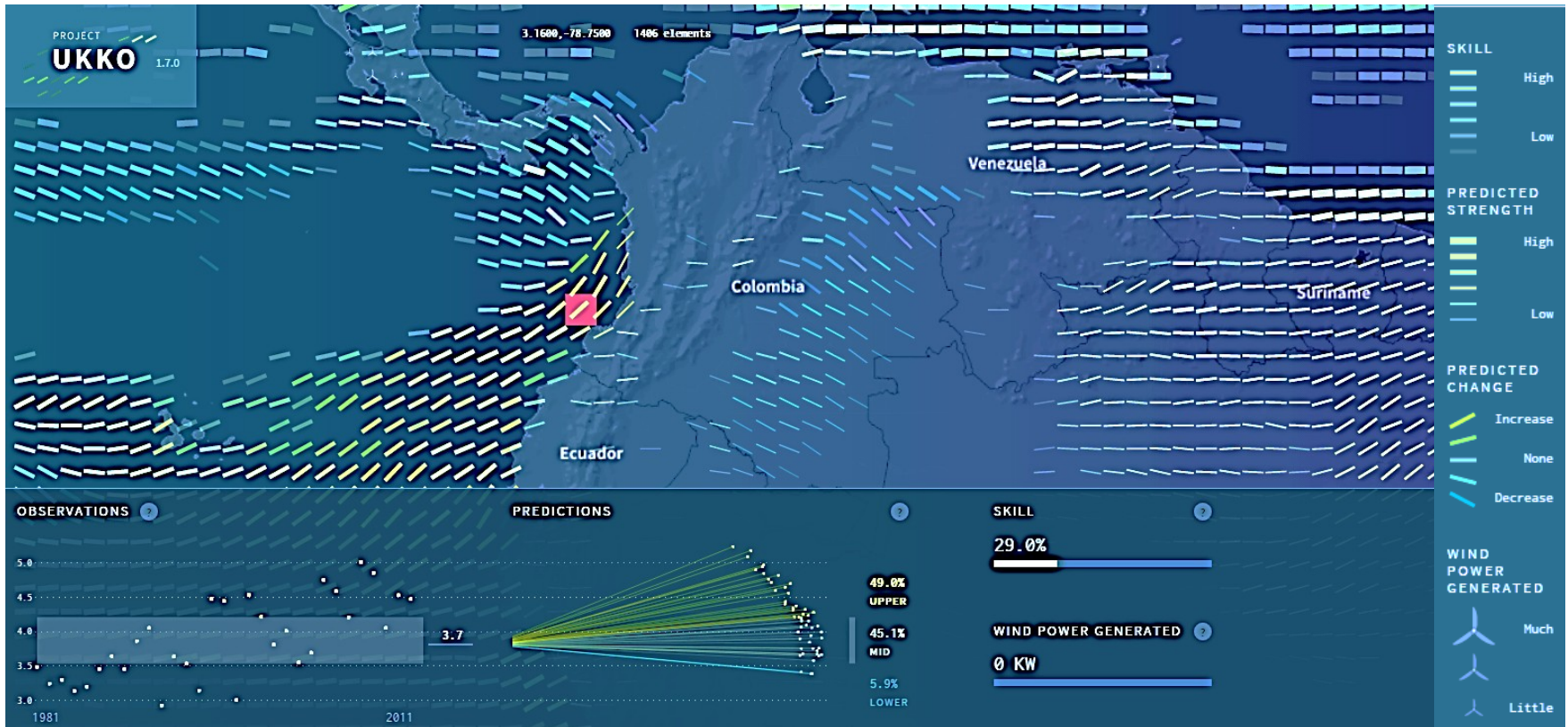
# Example: wind power predictions



## Illustrative examples of seasonal wind power predictions



# Example: wind power predictions



**RESILIENCE**  
PROTOTYPE

EUPORIAS



## Pre-Construction Decisions: **Annual to Decadal Timescales**

- **Wind farm planners:** Site selection
- **Wind farm investors:** Evaluate return on investments
- **Policy makers:** Understand changes to energy mix

## Post-Construction Decisions: **Monthly to Seasonal Timescales**

- **Energy producers:** Resource management strategies
- **Energy traders:** Resource effects on markets
- **Wind farm operators:** Planning for maintenance works
- **Wind farm investors:** Optimize return on investments



**Barcelona  
Supercomputing  
Center**

*Centro Nacional de Supercomputación*



EXCELENCIA  
SEVERO  
OCHOA

Thank you!

For further information please contact

**Info-services-es@bsc.es**

