

# Plot functions in SpecsVerification

2016-09-15

## Abstract

This document shows an example of the available plot functions in the R package SpecsVerification.

## Rank histogram

```
library(SpecsVerification)
ens <- matrix(rnorm(500),100,5)
obs <- rnorm(100)
rank.hist <- Rankhist(ens, obs)
PlotRankhist(rank.hist, mode = "prob.paper")
```

## Reliability diagram

```
N <- 1000
p <- rbeta(n = N, shape1 = 1, shape2 = 3)
y <- rbinom(n = N, size = 1, prob = p)
rd <- ReliabilityDiagram(p, y, plot = TRUE)
```

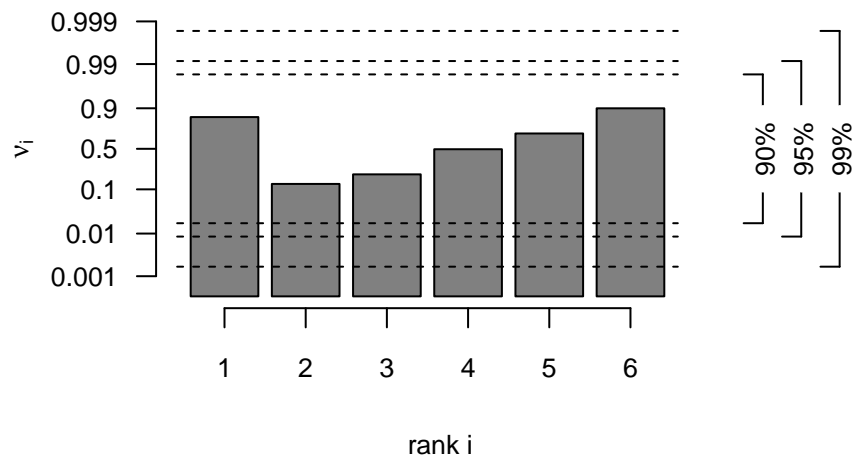


Figure 1: Example of a rank histogram.

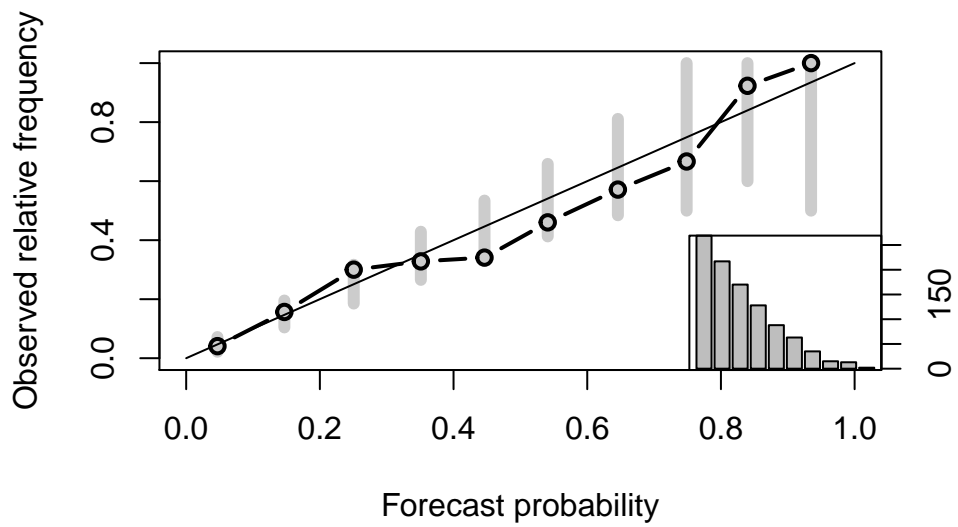


Figure 2: Example of a reliability diagram.